



**December 2023**

## **ARPA Monthly Progress Report**

for

# **East Ramapo Central School District**

Time Period: 12/19/2023 - 1/19/2024

Issued on 1/19/24 by:

**Jacobs Construction Management Services**

## Table of Contents

### **1. Construction Update**

- a. **ARPA Project Overview Statement & Description**
- b. **ARPA Schedule Overview (Level 3, 4 & 6) v.8 (DRAFT 1-19-24)**
- c. **Remaining Construction Sequence & Schedule Overview (DRAFT 1-11-24)**
- d. **ARPA Construction – Financial Update (DRAFT 1-19-24)**
- e. **Phase 1A – MEP Upgrades & Remaining Flooring & UV Casework at Elmwood**  
Equipment procured for Margetts & Kakiat and stored in a Warehouse in Mahwah, NJ.
- f. **Phase 1B – Doors/Hardware & Window Replacement**  
Submittals & Shop Drawings are essentially complete. Material is being ordered.
- g. **Phase 1B – ADA Toilet Room & Drinking Fountain Upgrades**  
TIPS Contract pending approval at 1-23-24 BOE Meeting.
- h. **PHASE 3A - Flooring Abatement & Replacement Work**  
Elmwood Casework Removal & Abatement planned for Summer 2024 work.  
Submittals and Shop Drawings are underway.
- i. **PHASE 3B – Doors/Hardware Replacement**  
Submittals & Shop Drawings currently in review.
- j. **PHASE 3C – ADA Toilet Room & Drinking Fountain Upgrades**  
TIPS Contract pending approval at 1-23-24 BOE Meeting.
- k. **PHASE 3D – Window Replacement**  
Final approval pending with NYSED.  
Final field measurements being performed, and shop drawings submitted for architectural review.

### **2. Health and Safety Update**

- a. Project Safety Reports

### **3. Appendices**

- a. Phase 1A – Change Orders & Payment Application - Status Logs
- b. Phase Kitchen Hoods - Submittal, Change Orders & Payment Application - Status Logs
- c. Phase 1A MEP – RFI, Submittal - Status Logs
- d. Phase 3A – RFI, Submittal - Status Logs



## 1. Construction Update

### a. ARPA Project Overview Statement

**Project Statement:**

*The East Ramapo Central School District has embarked on a major district-wide capital improvement project through the American Rescue Plan Act of 2021 (ARPA) funding, in combination with an Energy Performance Contract (EPC) which together endeavor to expand the program in the following areas:*

- 1) District-wide indoor air quality & select thermal envelope improvements*
- 2) District-wide security improvements*
- 3) Hazardous materials removals & replacements*
- 4) District-wide ADA improvements*
- 5) other energy related saving measures*

**Project Areas Expanded:**

**1. Indoor Air Quality & Thermal Envelope Improvements:**

**MEP Upgrades**

- Up to Thirteen (13) Schools

**Window Replacements**

- Two (2) - Three (3), up to eight (8) Schools

**2. Security Improvements:**

**Doors & Hardware Replacements**

- Up to Thirteen (13) Schools

**3. Hazardous Materials Removals & Replacements:**

**Flooring Abatement & Replacements**

- Eleven (11) Schools (+/-) 720,000 sf

**Kitchen Hood Abatement & Replacements**

- Eleven (11) Schools

**4. ADA Improvements:**

**ADA Upgrades**

- Up to Thirteen (13) Schools



## ARPA Project Description

### PHASE 1:

#### **EMERGENCY PROJECT: Flooring Abatement & Replacements** - (state contract)

- Spring Valley High School +/- 120,000 sf

### PHASE 1A:

#### **Flooring Abatement & Replacements** - (state contract)

- **Four (4) Schools +/- 300,000 sf**
  - Elmwood Elementary School
  - Kakiat Elementary School
  - Margetts Elementary School
  - Pomona Middle School
- **Remaining Flooring & UV Casework**
  - Elmwood Elementary School

#### **Kitchen Hood Abatement & Replacements** - (multi-prime contracts)

- **Phase #1 2022: Six (6) Schools**
  - Chestnut Ridge Elementary School
  - Elmwood Elementary School
  - Hempstead Elementary School
  - Kakiat Elementary School
  - Pomona Middle School
  - Margetts Elementary School
- **Phase #2 2023: Five (5) schools**
  - Eldorado Elementary School
  - Fleetwood Elementary School
  - Grandview Elementary School
  - Summit Park Elementary School
  - Lime Kiln Elementary School

#### **MEP Upgrades** - (state contract)

- Kakiat ES & Margetts ES – Scheduled for Summer 2024

### PHASE 1B:

- **ADA Upgrades** - (state contract) – Proposals to be received Fall 2023
  - Ramapo High School
  - Spring Valley High School
  - Elmwood Elementary School
  - Kakiat Elementary School
  - Margetts Elementary School
- **Doors & Hardware Replacements** - (state contract) - Winter / Spring / Summer 2024
  - Ramapo High School
  - Spring Valley High School
  - Elmwood Elementary School
  - Kakiat Elementary School
  - Margetts Elementary School



- **Window Replacements** - (state contract) - Spring 2024
  - Margetts Elementary School
  - Elmwood Elementary School
  - Kakiat Elementary School

**PHASE 3A:**

**Flooring Abatement & Replacements**

- Six (6) Schools
  - Eldorado Elementary School
  - Fleetwood Elementary School
  - Grandview Elementary School
  - Summit Park Elementary School
  - Hempstead Elementary School
  - Lime Kiln Elementary School
- Includes Piping covers, Fixed & Movable Casework and Windowsills
- Elmwood Elementary School - Summer 2024

**PHASE 3B:**

**Doors & Hardware Replacements** - (state contract) - Spring / Summer / Fall 2024

- Eight (8) remaining Schools

**PHASE 3C:**

**ADA Upgrades** - (state contract) - Proposals to be received Fall 2023

- Eight (8) remaining Schools

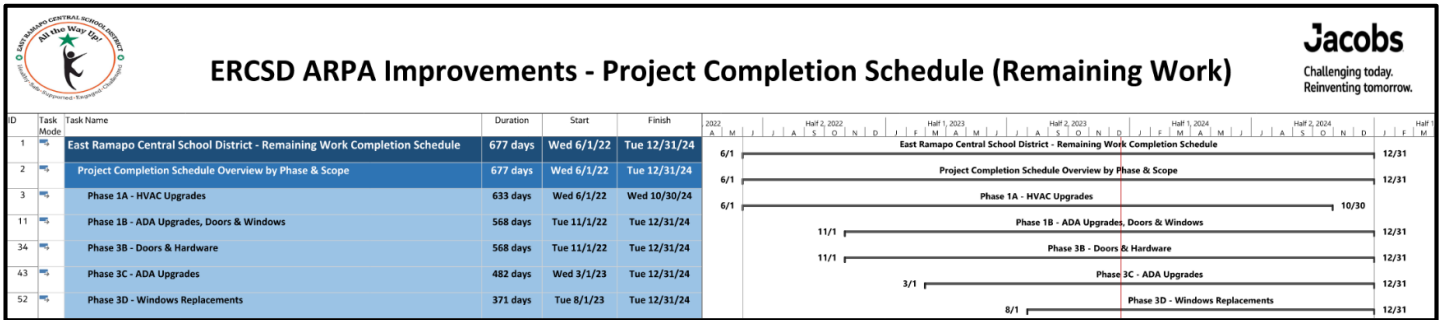
**PHASE 3D:**

**Window Replacements** - (contract type pending) - Spring / Summer / Fall 2024

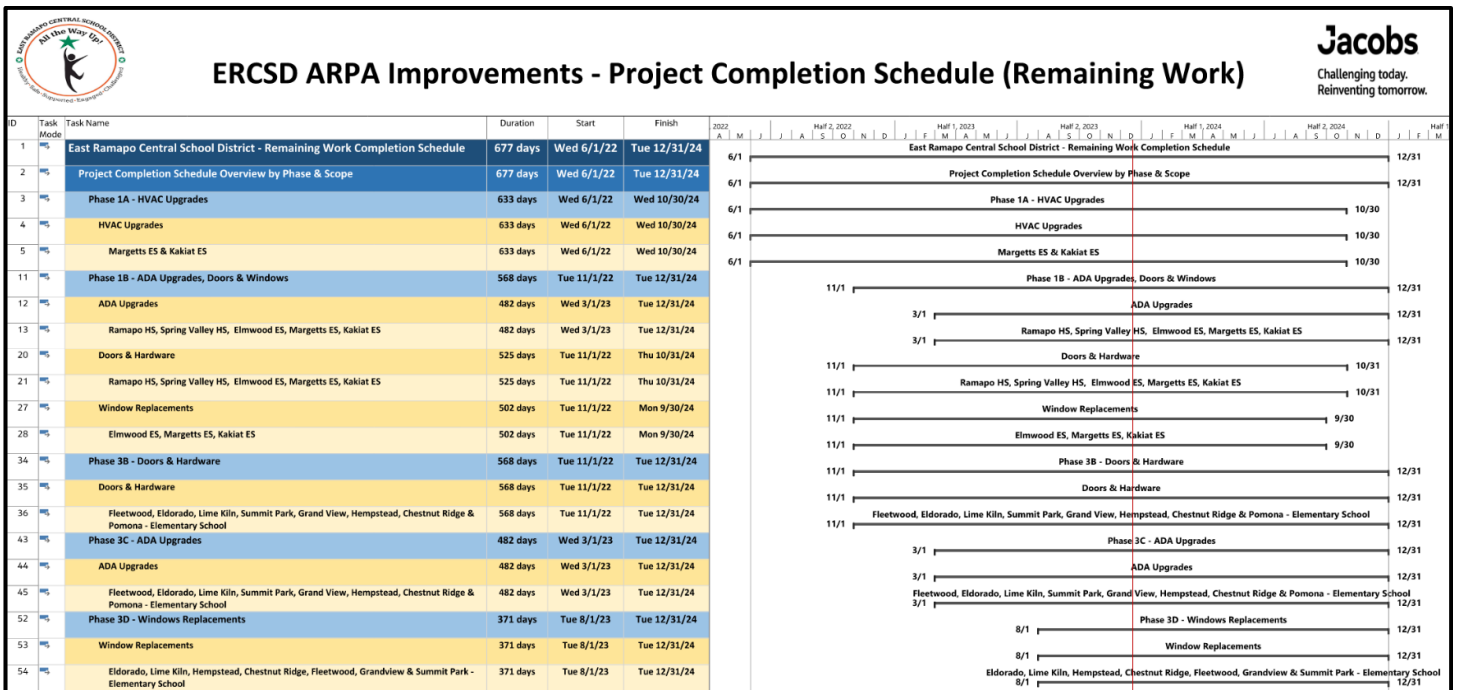
- Seven (7) remaining Schools



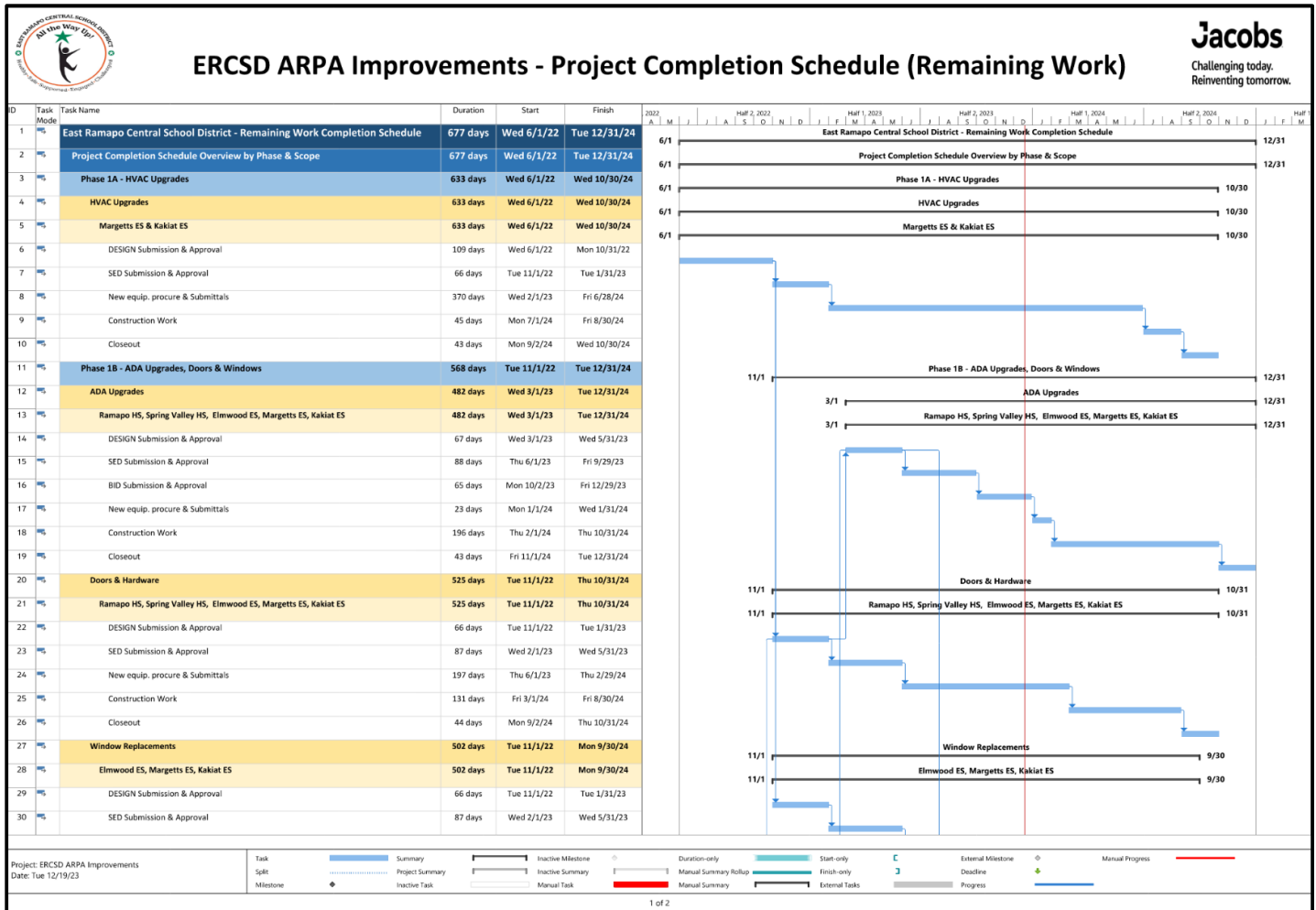
## b. Schedule Overview (Level 3) – v.8. DRAFT (1/19/24)



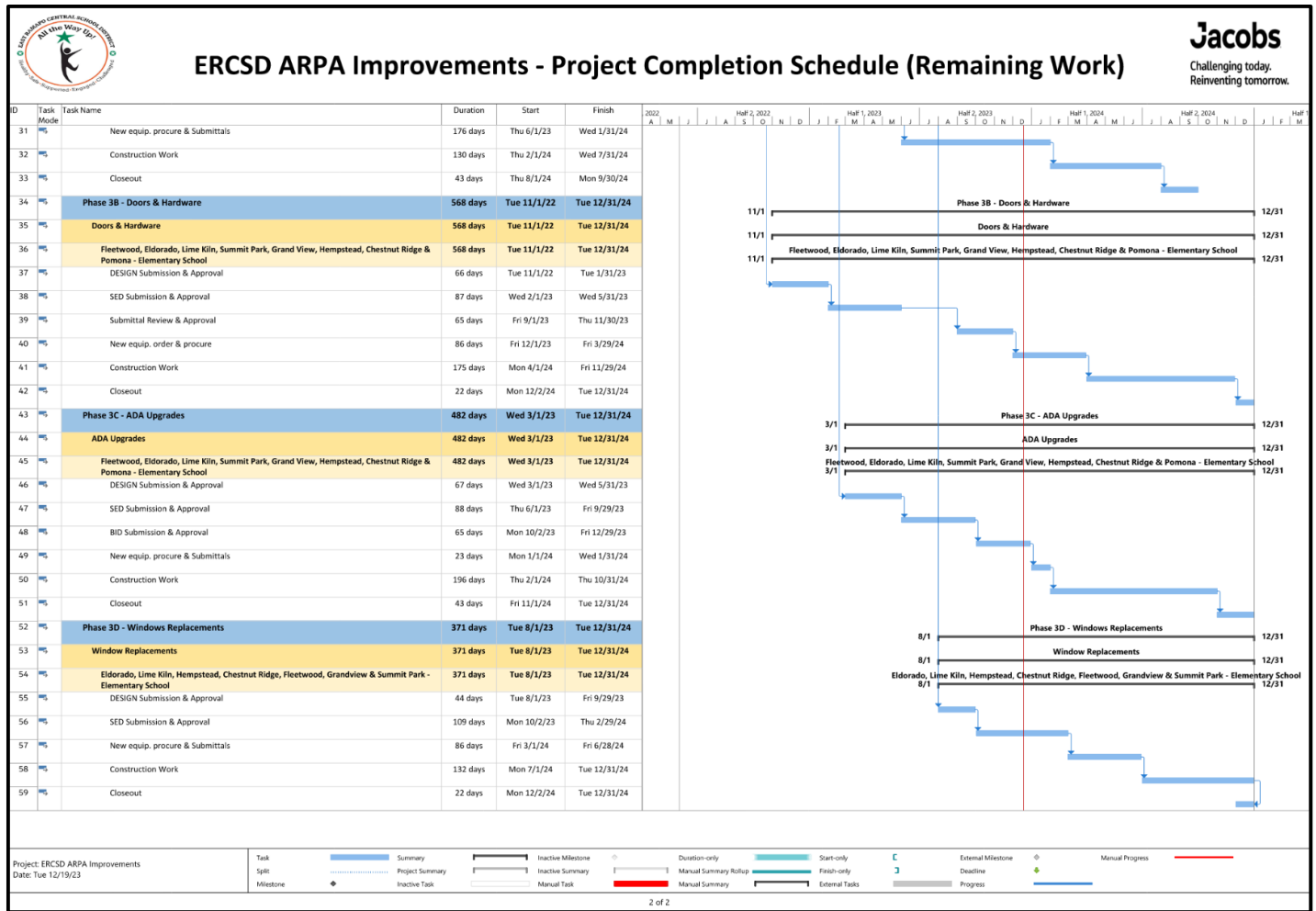
## b. ARPA Schedule Overview (Level 5) – v.8. DRAFT (1/19/24)



## b. Schedule Overview (Level 6) – v.8. DRAFT (1/19/24) – (Page 1 of 2)



## b. Schedule Overview (Level 6) – v.8. DRAFT (1/19/24) – (Page 2 of 2)







### c. ARPA Project - Projected Construction Work Areas - 2024 - **DRAFT**

| ERCSD ARPA - 2024 Construction Sequence & Schedule Overview |                              |        |        |        |        |        |                               |        |   |        |        |        | DRAFT  |
|---|------------------------------|--------|--------|--------|--------|--------|-------------------------------|--------|---|--------|--------|--------|--------|
| 1/11/2024   |                              |        |        |        |        |        |                               |        |   |        |        |        |        |
| school  | work description             | Feb-24 | Mar-24 | Apr-24 | May-24 | Jun-24 | Jul-24                        | Aug-24 | Sep-24  | Oct-24 | Nov-24 | Dec-24 | Jan-25 |
| Elmwood   |                              |        |        |        |        |        | vacant school                 |        |   |        |        |        |        |
|   | Doors                        | 2      |        |        |        |        |                               |        |   |        |        |        |        |
|   | Windows                      |        |        | 2      | 2      |        |                               |        |   |        |        |        |        |
|   | ADA + fountains              |        |        | 2      | 2      |        | 1                             | 1      |   |        |        |        |        |
| BOE 1/2/24  | MEP Casework                 |        |        |        |        |        | 1                             | 1      |   |        |        |        |        |
| Margetts  |                              |        |        |        |        |        | vacant school                 |        |   |        |        |        |        |
|   | Doors                        |        | 2      |        |        |        |                               |        |   |        |        |        |        |
|   | Windows                      |        |        |        | 2      | 2      |                               |        |   |        |        |        |        |
| BOE 1/16/24   | ADA + fountains              |        |        |        |        |        | 1                             | 1      |   |        |        |        |        |
|   | Unit Ventilator Replacements |        |        |        |        |        | 1                             | 1      | 2   |        |        |        |        |
| Kakiat  |                              |        |        |        |        |        | vacant school                 |        |   |        |        |        |        |
|   | Doors                        |        |        | 2      | 2      |        |                               |        |   |        |        |        |        |
|   | Windows                      |        | 2      |        |        |        |                               |        |   |        |        |        |        |
| BOE 1/16/24   | ADA + fountains              |        |        |        |        |        | 1                             | 1      |   |        |        |        |        |
|   | Unit Ventilator Replacements |        |        |        |        |        | 1                             | 1      | 2   |        |        |        |        |
| Ramapo  |                              |        |        |        |        |        | occupied school - Summer 2024 |        |   |        |        |        |        |
| (district work)   | Gym Floor Replacement        |        |        |        |        |        | 1                             | 1      |   |        |        |        |        |
|   | Doors                        |        |        |        |        | 2      | 1 + 2                         |        |   |        |        |        |        |
| BOE 1/16/24   | ADA + fountains              |        |        | 2      | 2      |        | 1                             | 1      | NOTE: Partial Occupancy - Nurse to Class 120 for Summer School. |        |        |        |        |
| Spring Valley   |                              |        |        |        |        |        | vacant school                 |        |   |        |        |        |        |
| (district work)   | Gym Floor Replacement        |        |        |        |        |        | 1                             | 1      |   |        |        |        |        |
|   | Doors                        |        |        |        |        |        | 1                             | 1      |   |        |        |        |        |
| BOE 1/16/24   | ADA + fountains + lift       |        |        |        |        |        | 1                             | 1      |   |        |        |        |        |
| Pomona  |                              |        |        |        |        |        | vacant school                 |        |   |        |        |        |        |
| (district work)   | Gym Floor Replacement        |        |        |        |        |        | 1                             | 1      |   |        |        |        |        |
|   | Doors                        | 2      | 2      |        |        |        |                               |        |   |        |        |        |        |
| BOE 1/16/24   | ADA + fountains              |        |        | 2      |        |        | 1                             | 1      |   |        |        |        |        |
| Chestnut Ridge  |                              |        |        |        |        |        | vacant school                 |        |   |        |        |        |        |
|   | Doors                        |        |        |        |        |        |                               | 1      | 2   |        |        |        |        |
| BOE 2/13/24   | Windows                      |        |        |        |        |        |                               |        |   |        |        | 2      |        |
| BOE 1/16/24   | ADA + fountains              | 2      |        | 2      |        |        | 1                             | 1      |   |        |        |        |        |
| Hempstead   |                              |        |        |        |        |        | vacant school                 |        |   |        |        |        |        |
|   | Doors                        |        |        |        |        |        |                               |        |   | 2      |        |        |        |
| BOE 2/13/24   | Windows                      |        |        |        |        | 2      | 1                             |        |   |        |        |        |        |
| BOE 1/16/24   | ADA + fountains              | 2      |        | 2      | 2      |        | 1                             | 1      |   |        |        |        |        |
| Eldorado  |                              |        |        |        |        |        | vacant school                 |        |   |        |        |        |        |
|   | Doors                        | 2      |        |        |        |        |                               |        |   |        |        |        |        |
| BOE 2/13/24   | Windows                      |        |        |        |        |        |                               |        |   | 2      | 2      |        |        |
| BOE 1/16/24   | ADA + fountains              | 2      |        | 2      | 2      |        | 1                             | 1      |   |        |        |        |        |
| Fleetwood   |                              |        |        |        |        |        | occupied school - Summer 2024 |        |   |        |        |        |        |
|   | 2 Doors                      |        | 2      |        |        |        |                               |        |   |        |        |        |        |
| BOE 2/13/24   | Windows                      |        |        |        |        |        | 1                             |        |   |        |        |        |        |
| BOE 1/16/24   | ADA + fountains              | 2      | 2      | 2      | 2      |        | 1                             | 1      | NOTE: Partial Occupancy - Nurse to Class 120 for Summer School. |        |        |        |        |
| Grandview   |                              |        |        |        |        |        | occupied school - Summer 2024 |        |   |        |        |        |        |
|   | Doors                        |        |        | 2      |        |        |                               |        |   |        |        |        |        |
| BOE 2/13/24   | Windows                      |        |        |        |        |        |                               | 1      | 2   |        |        |        |        |
| BOE 1/16/24   | ADA + fountains              | 2      | 2      | 2      | 2      |        | 1                             | 1      | NOTE: Partial Occupancy - Nurse to Class 120 for Summer School. |        |        |        |        |
| Summit Park   |                              |        |        |        |        |        | occupied school - Summer 2024 |        |   |        |        |        |        |
|   | Doors                        |        |        |        |        |        | 2                             |        |   |        |        |        |        |
| BOE 2/13/24   | Windows                      |        |        |        |        |        | 2                             | 2      |   |        |        |        |        |
| BOE 1/16/24   | ADA + fountains              | 2      | 2      | 2      | 2      |        | 1                             | 1      | NOTE: Partial Occupancy - Nurse to Class 120 for Summer School. |        |        |        |        |
| Lime Kiln   |                              |        |        |        |        |        | vacant school                 |        |   |        |        |        |        |
|   | Doors                        |        |        |        |        | 2      |                               |        |   |        |        |        |        |
| BOE 2/13/24   | Windows                      |        |        |        |        |        |                               |        | 2   | 2      |        |        |        |
| BOE 1/16/24   | ADA + fountains              |        |        |        |        |        | 1                             | 1      |   |        |        |        |        |



## d. ARPA Construction - Financial Update 1.19.24

### 1. Phase 1 Projects

#### i. Phase 1 Spring Valley EMERGENCY PROJECT - Flooring Replacement Work

##### Awarded Contracts:

|                 |                 |                          |
|-----------------|-----------------|--------------------------|
| RENU:           | \$ 2,326,580.00 | Bay Shore State Contract |
| Milburn:        | \$ 1,550,005.06 | Bay Shore State Contract |
| COMBINED TOTAL: | \$ 3,876,585.06 |                          |

##### Change Orders To-Date (Approved):

|                 |                |  |
|-----------------|----------------|--|
| RENU:           | (\$ 51,540.33) |  |
| Milburn:        | \$ 0.00        |  |
| COMBINED TOTAL: | (\$ 51,540.33) |  |

##### Paid To-Date:

|                 |                 |  |
|-----------------|-----------------|--|
| RENU:           | \$ 2,275,039.67 |  |
| Milburn:        | \$ 1,546,480.59 |  |
| COMBINED TOTAL: | \$ 3,821,520.26 |  |

#### ii. Phase 1A Flooring Replacement Work (Summer 2022)

##### Awarded Contracts:

|                 |                 |                          |
|-----------------|-----------------|--------------------------|
| RENU:           | \$ 5,630,303.47 | Bay Shore State Contract |
| Milburn:        | \$ 4,818,037.66 | Bay Shore State Contract |
| COMBINED TOTAL: | \$10,448,341.13 |                          |

##### Change Orders To-Date (Approved):

|                 |              |  |
|-----------------|--------------|--|
| RENU:           | \$ 30,951.46 |  |
| Milburn:        | \$ 1,309.13  |  |
| COMBINED TOTAL: | \$ 32,260.59 |  |

##### Paid To-Date:

|                 |                  |  |
|-----------------|------------------|--|
| RENU:           | \$ 5,624,124.20  |  |
| Milburn:        | \$ 4,819,346.66  |  |
| COMBINED TOTAL: | \$ 10,443,470.99 |  |

### 2. Kitchen Hoods Replacement Project

#### i. Kitchen Hoods & Equipment Replacement Project (Summer 2022)

##### Awarded Contracts: (Multi-Prime Bids)

|                       |                 |  |
|-----------------------|-----------------|--|
| Renu Interiors:       | \$ 963,000.00   | GC-01 (General Construction Contract)    |
| Rockland Electric:    | \$ 280,000.00   | EC-02 (Electrical Contract)              |
| Bertussi Contracting: | \$ 1,188,188.00 | MC-03 (Mechanical Contract)              |
| Mace Contracting:     | \$ 558,700.00   | PC-04 (Plumbing Contract)                |
| Joe Flihan Co.:       | \$ 344,732.00   | KC-05 (Kitchen Equipment State Contract) |
| COMBINED TOTAL:       | \$ 3,334,620.00 |  |

##### Change Orders To-Date (Approved):

|                       |                |  |
|-----------------------|----------------|--|
| Renu Interiors:       | \$ 65,087.13   |  |
| Rockland Electric:    | \$ 25,936.98   |  |
| Bertussi Contracting: | \$ (29,700.00) |  |
| Mace Contracting:     | \$ -           |  |
| COMBINED TOTAL:       | \$ 61,324.11   |  |

##### Paid To-Date:

|                       |                 |  |
|-----------------------|-----------------|--|
| Renu Interiors:       | \$ 946,734.24   |  |
| Rockland Electric:    | \$ 258,387.63   |  |
| Bertussi Contracting: | \$ 1,090,143.41 |  |
| Mace Contracting:     | \$ 497,325.00   |  |
| Joe Flihan Co.:       | \$ 191,209.00   |  |
| COMBINED TOTAL:       | \$ 2,983,799.28 |  |

### 3. Phase 3A – Flooring Abatement & Replacements

#### Awarded Contracts 1:

|                 |                  |
|-----------------|------------------|
| RENU:           | \$ 5,141,495     |
| Milburn:        | \$ 5,079,310     |
| COMBINED TOTAL: | \$ 10,220,805.00 |

#### Change Orders To-Date (Approved):

|                 |                |
|-----------------|----------------|
| RENU:           | \$ 684,783.40  |
| Milburn:        | \$ (64,792.21) |
| COMBINED TOTAL: | \$ 619,991.19  |

#### Paid To-Date:

|                 |                 |
|-----------------|-----------------|
| RENU:           | \$ 4,993,693.19 |
| Milburn:        | \$ 4,646,111.66 |
| COMBINED TOTAL: | \$ 9,639,804.85 |

---

**Total Combined Paid To-Date: \$ 26,888,595.38**

#### Pending Work:

### 4. Phase 1B – Door/Hardware & Window Replacements

#### Awarded Contracts:

|                    |              |
|--------------------|--------------|
| C&M Doors & Arrow: | \$ 7,077,689 |
| TOTAL:             | \$ 7,077,689 |

### 5. Phase 1A – HVAC Work

#### Awarded Contracts:

|                            |  |
|----------------------------|--|
| Trane - Margetts & Kakiat: | \$ 15,320,290.29 (Turnkey & Equipment Contracts) |
| Renu/Milburn (Elmwood):    | \$ 591,952.97                                    |
| TOTAL:                     | \$ 15,912,243.26                                 |

### 6. Phase 3B – Doors/Hardware Replacements

#### Awarded Contracts:

|                     |              |
|---------------------|--------------|
| Renu/Sunrise Doors: | \$ 3,350,919 |
| TOTAL:              | \$ 3,350,919 |

### 7. Phase 3D – Window Replacements

#### Awarded Contracts:

|                    |               |
|--------------------|---------------|
| C&M Doors & Arrow: | \$ 11,367,750 |
| TOTAL:             | \$ 11,367,750 |

### 8. Phase 1B & 3C – ADA Improvement Projects

#### Pending Contracts:

|                       |                 |
|-----------------------|-----------------|
| Essential Constructs: | \$ 9,847,657.79 |
| TOTAL:                | \$ 9,847,657.79 |

### 9. Pending Casework

#### Pending Contracts:

|        |        |
|--------|--------|
| TBD:   | \$ TBD |
| TOTAL: | \$ TBD |

---

**Total Remaining Work: \$ 47,556,259.05**



## Financial Summary:

|                                  |                   |
|----------------------------------|-------------------|
| Total Combined Paid To-Date      | : \$26,888,595.38 |
| Total Remaining Work             | : \$47,556,259.05 |
| Sub Total Work                   | : \$74,444,854.43 |
| Total ARPA Budget (Hard Cost)    | : \$77,115,829.00 |
| Remaining Budget to be allocated | : \$ 2,670,974.57 |

## 2. Health and Safety Update

### a. Project Safety Report

| <u>Safety</u>  | <u>This Period</u><br><u>12/19/23-</u><br><u>1/19/24</u> | <u>Cumulative</u><br><u>To-Date</u> |
|--|--|-------------------------------------|
| First AID Cases:                                     | 0  | 0                                   |
| Recordable Injuries:                                 | 0  | 0                                   |
| Recordable Illnesses:                                | 0  | 0                                   |
| Lost Workdays Cases:                                 | 0  | 0                                   |
| <b><u>Project Total Injuries/Cases Reported:</u></b> | <b>0</b>   | <b>0</b>                            |
| <b><u>OSHA Incident Rate (OIR):</u></b>              | <b>0</b>   | <b>0</b>                            |

**Note:** OSHA incident Rate = Total number of injuries & illnesses multiplied by 3,874 (OSHA LaborHours) divided by the number of hours worked by all employee.



## **Appendices**

- a. Phase 1A – Change Orders & Payment Applications - Status Logs
- b. Phase Kitchen Hoods - RFI, Submittal, Change Orders & Payment Application - Status Logs
- c. Phase 1A MEP – RFI, Submittal - Status Logs
- d. Phase 3A – RFI, Submittal - Status Logs



### Phase 1A – Flooring Abatement - Pay Request's Summary - To Date

JACOBS

### Pay Requests Summary Till Date

**Project Name :** Phase 1A - Flooring Abatement

| Sr. No. | Contract   | Number   | Period To  | From Company   | Current Payment Due | Status                                  | Remarks         |
|---------|--|--|------------|----------------|---------------------|---|-----------------|
| 1       | 1A - 01 - GC - MILBURN - NEW YORK STATE - 001 - RENU Interiors | 1A - 01 - GC - MILBURN - NEW YORK STATE - 001 - PA# 0001 | 7/31/2022  | RENU Interiors | \$2,702,224.80      | Billed                                  | -               |
| 2       | 1A - 01 - GC - MILBURN - NEW YORK STATE - 001 - RENU Interiors | 1A - 01 - GC - MILBURN - NEW YORK STATE - 001 - PA# 0002 | 8/31/2022  | RENU Interiors | \$2,050,195.04      | Billed                                  | -               |
| 3       | 1A - 01 - GC - MILBURN - NEW YORK STATE - 001 - RENU Interiors | 1A - 01 - GC - MILBURN - NEW YORK STATE - 001 - PA# 0003 | 9/30/2022  | RENU Interiors | \$27,181.95         | Billed                                  | -               |
| 4       | 1A - 01 - GC - MILBURN - NEW YORK STATE - 001 - RENU Interiors | 1A - 01 - GC - MILBURN - NEW YORK STATE - 001 - PA# 0004 | 10/31/2022 | RENU Interiors | \$28,435.87         | Billed                                  | -               |
| 5       | 1A - 01 - GC - MILBURN - NEW YORK STATE - 001 - RENU Interiors | 1A - 01 - GC - MILBURN - NEW YORK STATE - 001 - PA# 0005 | 5/31/2022  | RENU Interiors | \$11,309.13         | Billed                                  | -               |
| 6       | 1A - 01 - GC - RENU - BAYSHORE - 002 - RENU Interiors          | 1A - 01 - GC - RENU - BAYSHORE - 002 - PA# 0001          | 7/31/2022  | RENU Interiors | \$1,796,575.36      | Billed                                  | -               |
| 7       | 1A - 01 - GC - RENU - BAYSHORE - 002 - RENU Interiors          | 1A - 01 - GC - RENU - BAYSHORE - 002 - PA# 0002          | 8/31/2022  | RENU Interiors | \$2,244,478.10      | Billed                                  | -               |
| 8       | 1A - 01 - GC - RENU - BAYSHORE - 002 - RENU Interiors          | 1A - 01 - GC - RENU - BAYSHORE - 002 - PA# 0003          | 9/30/2022  | RENU Interiors | \$1,103,764.15      | Billed                                  | -               |
| 9       | 1A - 01 - GC - RENU - BAYSHORE - 002 - RENU Interiors          | 1A - 01 - GC - RENU - BAYSHORE - 002 - PA# 0004          | 10/31/2022 | RENU Interiors | \$120,449.30        | Billed                                  | -               |
| 10      | 1A - 01 - GC - RENU - BAYSHORE - 002 - RENU Interiors          | 1A - 01 - GC - RENU - BAYSHORE - 002 - PA# 0005          | 3/31/2023  | RENU Interiors | \$274,540.71        | Billed                                  | -               |
| 11      | 1A - 01 - GC - RENU - BAYSHORE - 002 - RENU Interiors          | 1A - 01 - GC - RENU - BAYSHORE - 002 - PA# 0006          | 6/30/2023  | RENU Interiors | \$76,102.83         | Billed                                  | -               |
| 12      | 1A - 01 - GC - RENU - BAYSHORE - 002 - RENU Interiors          | 1A - 01 - GC - RENU - BAYSHORE - 002 - PA# 0007          | 8/17/2023  | RENU Interiors | \$8,213.75          | Billed                                  | -               |
|         |  |  |            |                |                     |   | Total Items: 12 |
|         |  |  |            |                | \$10,443,470.99     | Total Billed Amount (\$)                |                 |
|         |  |  |            |                | \$0.00              | Total Open Amount (\$)                  |                 |
|         |  |  |            |                | \$10,443,470.99     | Grand Total (Billed + Open) Amount (\$) |                 |

powered by  
**kahua™**

Page 1 of 1



### Phase 1A – Flooring Abatement – Change Order's Summary - To Date

| Change Orders Summary Till Date              |   |        |   |                 |               |                         |   |         |
|--|---|--------|---|-----------------|---------------|-------------------------|---|---------|
| Project Name : Phase 1A - Flooring Abatement |   |        |   |                 |               |                         |   |         |
| Sr. No.                                      | Contract  | Number | Description   | Workflow Status | Total         | Current Contract Amount | Status                                    | Remarks |
| 1  | 1A - 01 - GC - RENU - BAYSHORE - 002 - RENU Interiors | 0001   | Kakiat - PCO # 8                                      | Locked          | \$33,120.00   | \$5,743,274.47          | Approved                                  | -       |
| 2  | 1A - 01 - GC - RENU - BAYSHORE - 002 - RENU Interiors | 0002   | Elmwood - PCO # 6                                     | Locked          | \$7,054.00    | \$5,743,274.47          | Approved                                  | -       |
| 3  | 1A - 01 - GC - RENU - BAYSHORE - 002 - RENU Interiors | 0003   | Elmwood - PCO # 11                                    | Locked          | \$5,433.00    | \$5,743,274.47          | Approved                                  | -       |
| 4  | 1A - 01 - GC - RENU - BAYSHORE - 002 - RENU Interiors | 0004   | Pomona - PCO # 5                                      | Locked          | \$15,812.00   | \$5,743,274.47          | Approved                                  | -       |
| 5  | 1A - 01 - GC - RENU - BAYSHORE - 002 - RENU Interiors | 0005   | Pomona - PCO # 10                                     | Locked          | \$17,952.00   | \$5,743,274.47          | Approved                                  | -       |
| 6  | 1A - 01 - GC - RENU - BAYSHORE - 002 - RENU Interiors | 0006   | Margetts - PCO # 14                                   | Locked          | \$33,500.00   | \$5,743,274.47          | Approved                                  | -       |
| 7  | 1A - 01 - GC - RENU - BAYSHORE - 002 - RENU Interiors | 0007   | Margetts - PCO # 24 - Change Order - Plumbing         | Locked          | \$1,440.00    | \$5,744,714.47          | Approved                                  | -       |
| 8  | 1A - 01 - GC - RENU - BAYSHORE - 002 - RENU Interiors | 0008   | Elmwood - PCO # 22 - Change Order - Plumbing          | Locked          | \$2,180.00    | \$5,746,874.47          | Approved                                  | -       |
| 9  | 1A - 01 - GC - MILBURN - NEW YORK STATE - 001         | 0012   | Kakiat Steam Academy 4 Science Rooms                  | Locked          | \$1,309.13    | \$4,819,346.79          | Approved                                  | -       |
| 10   | 1A - 01 - GC - RENU - BAYSHORE - 002 - RENU Interiors | 0009   | Kakiat - PCO # 26 - Move funds between schools        | Sent for Review | \$0.00        | \$0.00                  | Void                                      | -       |
| 11   | 1A - 01 - GC - RENU - BAYSHORE - 002 - RENU Interiors | 0010   | Kakiat - PCO # 23 - Change Order - Plumbing           | Locked          | \$4,320.00    | \$5,751,194.47          | Approved                                  | -       |
| 12   | 1A - 01 - GC - RENU - BAYSHORE - 002 - RENU Interiors | 0011   | Pomona - PCO # 25 - Change Order - Plumbing           | Locked          | \$44,648.00   | \$5,795,834.47          | Approved                                  | -       |
| 13   | 1A - 01 - GC - RENU - BAYSHORE - 002 - RENU Interiors | 0013   | Deduct Change Order - Margetts                        | Locked          | (\$64,320.20) | \$5,661,254.93          | Approved                                  | -       |
| 14   | 1A - 01 - GC - RENU - BAYSHORE - 002 - RENU Interiors | 0014   | Deduct Change Order - Elmwood                         | Locked          | (\$45,384.49) | \$5,750,449.98          | Approved                                  | -       |
| 15   | 1A - 01 - GC - RENU - BAYSHORE - 002 - RENU Interiors | 0015   | Deduct Change Order - Pomona                          | Locked          | (\$24,874.75) | \$5,725,575.23          | Approved                                  | -       |
| 16   | 1A - 01 - GC - RENU - BAYSHORE - 002 - RENU Interiors | 0016   | Additional work at Kakiat, Elmwood, Pomona & Margetts | Sent for Review | \$31,013.22   | \$5,661,254.93          | Open                                      | -       |
|  |   |        |   |                 |               | Total Items: 16         |   |         |
|  |   |        |   |                 |               | \$32,260.59             | Total Approved Change Order's Amount (\$) |         |

**Phase KH - Kitchen Hoods Replacement - Pay Request's Summary - To Date**

Project Name : Kitchen Hoods Replacement

Pay Requests Summary Till Date

Jacobs

| Sr. No.                                | Contract                                     | Number                        | Period To  | From Company           | Current Payment Due                               | Status                                  | Remarks |
|--|--|-------------------------------|------------|------------------------|---|---|---------|
| 1                                      | KH - 01 - GC - 001 - General Construction    | KH - 01 - GC - 001 - PAF 0001 | 7/31/2022  | RENU Interiors         | \$87,218.55                                       | Billed                                  |         |
| 2                                      |  | KH - 01 - GC - 001 - PAF 0002 | 8/31/2022  |                        | \$177,667.10                                      | Billed                                  |         |
| 3                                      |  | KH - 01 - GC - 001 - PAF 0003 | 11/30/2022 |                        | \$182,620.16                                      | Billed                                  |         |
| 4                                      |  | KH - 01 - GC - 001 - PAF 0004 | 10/1/2023  |                        | \$48,647.37                                       | Billed                                  |         |
| 5                                      |  | KH - 02 - EC - 001 - PAF 0005 | 4/30/2023  |                        | \$22,841.36                                       | Billed                                  |         |
| 6                                      |  | KH - 02 - EC - 001 - PAF 0006 | 6/30/2023  |                        | \$23,915.96                                       | Billed                                  |         |
| 7                                      |  | KH - 02 - EC - 001 - PAF 0007 | 7/31/2023  |                        | \$244,094.99                                      | Billed                                  |         |
| 8                                      |  | KH - 02 - EC - 001 - PAF 0008 | 8/31/2023  |                        | \$182,528.75                                      | Billed                                  |         |
| 9                                      |  | KH - 02 - EC - 001 - PAF 0009 | 11/30/2023 |                        | \$1,733.75  | Open                                    |         |
|  |  |                               |            |                        | \$946,734.24                                      | Total Billed Amount (\$)                |         |
|  |  |                               |            |                        | \$1,733.75  | Total Open Amount (\$)                  |         |
| Total Items: 9                         |  |                               |            |                        |   |   |         |
| Sr. No.                                | Contract                                     | Number                        | Period To  | From Company           | Current Payment Due                               | Status                                  | Remarks |
| 1                                      | KH - 02 - EC - 001 - Electrical Construction | KH - 02 - EC - 001 - PAF 0001 | 8/31/2022  | Rockland Electric      | \$14,131.25                                       | Billed                                  |         |
| 2                                      |  | KH - 02 - EC - 001 - PAF 0002 | 10/31/2022 |                        | \$42,764.25                                       | Billed                                  |         |
| 3                                      |  | KH - 02 - EC - 001 - PAF 0003 | 12/30/2022 |                        | \$77,244.50                                       | Billed                                  |         |
| 4                                      |  | KH - 02 - EC - 001 - PAF 0004 | 3/31/2022  |                        | \$15,284.39                                       | Billed                                  |         |
| 5                                      |  | KH - 02 - EC - 001 - PAF 0005 | 7/31/2022  |                        | \$53,912.50                                       | Billed                                  |         |
| 6                                      |  | KH - 02 - EC - 001 - PAF 0006 | 9/15/2022  |                        | \$55,840.74                                       | Billed                                  |         |
|  |  |                               |            |                        | \$258,387.63                                      | Total Billed Amount (\$)                |         |
|  |  |                               |            |                        | \$0.00  | Total Open Amount (\$)                  |         |
| Total Items: 6                         |  |                               |            |                        |   |   |         |
| Sr. No.                                | Contract                                     | Number                        | Period To  | From Company           | Current Payment Due (incl. Retainage Amount - 5%) | Status                                  | Remarks |
| 1                                      | KH - 03 - MC - 001 - Mechanical Construction | KH - 03 - MC - 001 - PAF 0001 | 10/31/2022 | Bertuzzi Contracting   | \$216,161.04                                      | Billed                                  |         |
| 2                                      |  | KH - 03 - MC - 001 - PAF 0002 | 2/1/2023   |                        | \$475,142.79                                      | Billed                                  |         |
| 3                                      |  | KH - 03 - MC - 001 - PAF 0003 | 8/31/2023  |                        | \$454,839.58                                      | Billed                                  |         |
| 4                                      |  | KH - 03 - MC - 001 - PAF 0004 | 11/30/2023 |                        | \$68,344.59                                       | Open                                    |         |
|  |  |                               |            |                        | \$1,090,143.41                                    | Total Billed Amount (\$)                |         |
|  |  |                               |            |                        | \$68,344.59                                       | Total Open Amount (\$)                  |         |
| Total Items: 4                         |  |                               |            |                        |   |   |         |
| Sr. No.                                | Contract                                     | Number                        | Period To  | From Company           | Current Payment Due (incl. Retainage Amount - 5%) | Status                                  | Remarks |
| 1                                      | KH - 03 - MC - 001 - Plumbing Construction   | KH - 04 - PC - 001 - PAF 0001 | 10/31/2022 | Mace Contracting Corp. | \$241,822.50                                      | Billed                                  |         |
| 2                                      | KH - 03 - MC - 001 - Plumbing Construction   | KH - 04 - PC - 001 - PAF 0002 | 10/31/2023 | Mace Contracting Corp. | \$255,902.50                                      | Billed                                  |         |
|  |  |                               |            |                        | \$497,325.00                                      | Total Billed Amount (\$)                |         |
|  |  |                               |            |                        | \$0.00  | Total Open Amount (\$)                  |         |
| Total Items: 2                         |  |                               |            |                        |   |   |         |
| Summary - Billed + Open - Amounts (\$) |  |                               |            |                        |   |   |         |
|  |  |                               |            |                        | \$2,792,590.28                                    | Grand Total Billed Amount (\$)          |         |
|  |  |                               |            |                        | \$70,078.34                                       | Grand Total Open Amount (\$)            |         |
|  |  |                               |            |                        | \$2,862,668.62                                    | Grand Total (Billed + Open) Amount (\$) |         |

powered by

kahua

Page 1 of 1








### Phase KH - Kitchen Hoods Replacement – Change Order's Summary to Date

| Approved Change Orders Summary Till Date |                                     |        |  |                 |              |                         |   |  |
|--|-------------------------------------|--------|--|-----------------|--------------|-------------------------|---|--|
| Project Name : Kitchen Hoods Replacement |                                     |        |  |                 |              |                         |   |  |
| Sr. No.                                  | Contract                            | Number | Description  | Workflow Status | Total        | Current Contract Amount | Status                                    | Remarks  |
| 1  | KH - 01 - GC - RENU Interiors       | 0001   | CO # 2 - R1 - Temporary Storage  | Locked          | \$23,308.00  | \$986,300.00            | Approved                                  | -  |
| 2  |                                     | 0002   | Additional Abatement @ Chestnut Ridge                                    | Locked          | \$17,847.43  | \$1,004,147.43          | Approved                                  |  |
| 3  |                                     | 0003   | Flashing of 4 HVAC EPDM pipe boots & 2 copper pitch pockets and flashing | Void            | \$0.00       | \$0.00                  | Void                                      | This change order should be directed to Rockland Electric. This is included in EC scope of work. Please reference the Construction documents - ERCSO E0001. Contract detail 2/E0001. |
| 4  |                                     | 0004   | Life & Safety Plan Work East Ramapo                                      | Locked          | \$23,939.70  | \$1,028,087.13          | Approved                                  |  |
| 5  |                                     | 0005   | Additional Abatement at Fleetwood ES                                     | Void            | \$0.00       | \$0.00                  | Void                                      |  |
| 6  |                                     | 0006   | Additional Abatement at Grandview ES                                     | Void            | \$0.00       | \$0.00                  | Void                                      |  |
| 7  |                                     | 0007   | Additional Abatement at Summit Park ES                                   | Void            | \$0.00       | \$0.00                  | Void                                      |  |
| 8  |                                     | 0008   | Abatement CO based on CIC 99-01 GC                                       | In Review       | \$132,976.10 | \$1,028,087.13          | Open                                      | Under Review   |
| 9  | KH - 02 - EC - Rockland Electric    | 0001   | Kitchen Refrigeration Units  | Locked          | \$16,099.36  | \$296,099.36            | Approved                                  |  |
| 10                                       |                                     | 0002   | Kitchen Refrigeration Repairs  | Locked          | \$946.61     | \$297,045.97            | Approved                                  |  |
| 11                                       |                                     | 0003   | Fire Alarm Start Up  | Locked          | \$2,357.72   | \$299,403.69            | Approved                                  |  |
| 12                                       |                                     | 0004   | Temporary Wiring T&M   | Locked          | \$4,497.88   | \$303,901.57            | Approved                                  |  |
| 13                                       |                                     | 0005   | Permanent Wiring T&M   | Locked          | \$2,935.41   | \$305,936.98            | Approved                                  |  |
| 14                                       |                                     | 0006   | Markets 2x2 Fixtures   | In Review       | \$979.00     | \$305,936.98            | Open                                      | Under Review   |
| 15                                       |                                     | 0007   | Additional Lighting  | In Review       | \$1,523.56   | \$305,936.98            | Open                                      | Under Review   |
| 15                                       |                                     | 0008   | PCO EC-8 Fire Alarm OT   | In Review       | \$2,735.80   | \$305,936.98            | Open                                      | Under Review   |
| 16                                       | KH - 03 - MC - Bertucci Contracting | 0001   | Credit CO for unused Allowance - 11 Schools                              | In Review       | \$29,760.00  |                         | Approved                                  | Under Review   |
|  |                                     |        |  |                 |              | Total Items: 15         |   |  |
|  |                                     |        |  |                 |              | \$61,324.11             | Total Approved Change Order's Amount (\$) |  |
|  |                                     |        |  |                 |              | \$138,214.46            | Total Open Change Order's Amount (\$)     |  |

## Kitchen Hoods Replacement – Renu Interior - Submittal Register – Page 01 of 04


| <div> <div>  <p><b>Jacobs</b><br/>Challenging today.<br/>Reinventing tomorrow.</p> </div> <div> <p><b>Project Name :</b> EAST RAMAPO CENTRAL SCHOOL DISTRICT</p> <p><b>Sub - Project Name :</b> KITCHEN HOODS REPLACEMENT</p> <p><b>Client Name :</b> EAST RAMAPO CENTRAL SCHOOL DISTRICT</p> <p><b>Contractor Name :</b> RENU INTERIORS</p> </div> <div>  </div> </div> |           |                              |                      |                 |                      |   |  |                             |                    |                                 |
|--|-----------|------------------------------|----------------------|-----------------|----------------------|---|--|-----------------------------|--------------------|---------------------------------|
| Submittals Required as per Contract  |           |                              |                      |                 |                      | Submissions on Kahua Till Date  |  |                             |                    |                                 |
| Sr. No.  | Spec. No. | Spec. Name                   | Contract             | Contractor Name | Clause No.           | Submittal Name  | Submitted by Prime Contractor till date (Yes/No) | Submittal No.               | Approved by CSArch | Remarks                         |
| 1  | 24119     | Selective Demolition         | General Construction | Renu Interiors  | 1.5                  | Informational Submittals (Proposed Protection Measures, Schedule of Selective Demolition Activities, Pre-demolition Photographs or Video, Warranties)   | Yes  | KH-01-GC-0021               | Yes                |                                 |
| 2  | 28213     | Asbestos Abatement           |                      |                 | 1.03 (Section A & B) | Documentation (Certificates, Licenses, Respiratory Protection Program, NYS DOL Certificate etc.)  | Yes  | KH-01-GC-0001               | Yes                |                                 |
|  |           |                              |                      |                 | 1.03 (Section C & D) | Documentation upon Final Close out of Project   | Yes  | KH-01-GC-0036               | Incomplete         |                                 |
| 3  | 51200     | Structural Steel Framing     |                      |                 | 1.5                  | Action Submittals (Product Data, Shop Drawings, WPS & PQR, Delegated Design Submittal)  | Yes  | KH-01-GC-002 - KH-01-GC-007 | Incomplete         |                                 |
|  |           |                              |                      |                 | 1.6                  | Informational Submittals (Qualification Data, Paint Compatibility Certificates, Mill & Product Test Reports, Survey of existing conditions, Field quality-control reports)  | Yes  | KH-01-GC-028                | Incomplete         |                                 |
| 4  | 61000     | Rough Carpentry              |                      |                 | 1.4                  | Product Data & Research/Evaluation Reports  | Yes  | KH-01-GC-0022               | Yes                |                                 |
| 5  | 61600     | Sheathing                    |                      |                 | 1.3                  | Product Data  | Yes  | KH-01-GC-0029               | Incomplete         |                                 |
| 6  | 72100     | Thermal Insulation           |                      |                 | 1.3                  | Action Submittals (Product Data)  | Yes  | KH-01-GC-030                | Incomplete         |                                 |
|  |           |                              |                      |                 | 1.4                  | Informational Submittals (Installer's Certification, Product Test Reports, Research Reports)  | Yes  | KH-01-GC-033                | Incomplete         |                                 |
|  |           |                              |                      |                 | 1.4                  | Action Submittals (Product Data, Shop Drawings)   | No   | -                           | No                 |                                 |
| 7  | 75323     | EPDM Roofing                 |                      |                 | 1.5                  | Informational Submittals (Qualification data, Manufacturer Certificates, Product Test Reports, Evaluation & Field Test Reports)   | No   | -                           | No                 |                                 |
|  |           |                              |                      |                 | 1.6                  | Closeout Submittals -<br>A. Maintenance Data: For roofing system to include in maintenance manuals.<br>B. Certified statement from existing roof membrane manufacturer stating that existing roof warranty has not been affected by Work performed under this Section.  | No   | -                           | No                 |                                 |
| 8  | 77100     | Roof Specialties             |                      |                 | 1.3                  | Action Submittals (Product Data, Shop Drawings, Samples)  | Yes  | KH-01-GC-0031               | Incomplete         |                                 |
|  |           |                              |                      |                 | 1.4                  | Informational Submittals (Qualification Data, Certificates, Test Reports, Sample Warranty)  | No   | -                           | No                 |                                 |
|  |           |                              |                      |                 | 1.5                  | Closeout Submittals - Maintenance Data: For roofing specialties to include in maintenance manuals.  | Yes  | KH-01-GC-0036               | Incomplete         |                                 |
| 9  | 77200     | Roof Accessories             |                      |                 | 1.4                  | Action Submittals (Product Data, Shop Drawings, Samples, Delegated-Design Submittal)  | Yes  | KH-01-GC-0024               | Yes                | Contractor to review & resubmit |
|  |           |                              |                      |                 | 1.5                  | Informational Submittals (Coordination Drawings, Sample Warranty)   | Yes  | KH-01-GC-0036               | Incomplete         |                                 |
|  |           |                              |                      |                 | 1.6                  | Closeout Submittals - Operation and Maintenance Data: For roof accessories to include in operation and maintenance manuals.   | Yes  | KH-01-GC-0036               | Incomplete         |                                 |
| 10   | 78413     | Penetration Firestopping     |                      |                 | 1.4                  | Action Submittals (Product Data & Schedule)   | Yes  | KH-01-GC-0017               | Yes                |                                 |
|  |           |                              |                      |                 | 1.5                  | Informational Submittals (Qualification Data, Test Reports)   | Yes  | KH-01-GC-0032               | Incomplete         |                                 |
|  |           |                              |                      |                 | 1.6                  | Closeout Submittals - Installer Certificates: From installer indicating that penetration firestopping systems have been installed in compliance with requirements and manufacturer's written instructions.  | No   | -                           | No                 |                                 |
| 11   | 79200     | Joint Sealants               |                      |                 | 1.2                  | Action Submittals (Product Data, Samples for Initial Selection, Joint Sealant Schedule)   | Yes  | KH-01-GC-0018               | Incomplete         | R&R ON 12/13/23 to CSArch       |
|  |           |                              |                      |                 | 1.3                  | Informational Submittals (Test and Evaluation Reports)  | Yes  | KH-01-GC-0034               | Incomplete         |                                 |
|  |           |                              |                      |                 | 1.4                  | Closeout Submittals -<br>A. Warranty Documentation:<br>1. Manufacturer's special warranties<br>2. Installer's special warranties.   | Yes  | KH-01-GC-0036               | Incomplete         |                                 |
| 12   | 83113     | Access Doors and Frames      |                      |                 | 1.2                  | Action Submittals (Product Data, Samples, Product Schedule)   | Yes  | KH-01-GC-0023               | Yes                |                                 |
|  |           |                              |                      |                 | 1.3                  | Informational Submittals (Qualification Data)   | No   |                             | No                 |                                 |
|  |           |                              |                      |                 | 1.4                  | Closeout Submittals - Record Documents: For fire-rated doors, list of applicable room name and number in which access door is located.  | No   | -                           | No                 |                                 |
| 13   | 92216     | Non-Structural Metal Framing |                      |                 | 1.2                  | Action Submittals (Product Data)  | Yes  | KH-01-GC-0019               | Yes                |                                 |
|  |           |                              |                      |                 | 1.3                  | Informational Submittals (Product Certificates, Evaluation Reports)   | Yes  | KH-01-GC-0035               | Incomplete         |                                 |
| 14   | 92900     | Gypsum Board Type X          |                      |                 | 1.2                  | Action Submittals (Product Data, Samples)   | Yes  | KH-01-GC-004                | Yes                |                                 |
| 15.1   | 95113     | Acoustical Panel Ceilings    |                      |                 | 1.4                  | Action Submittals (Product Data, Samples)   | Yes  | KH-01-GC-0026               | Yes                |                                 |
|  |           |                              |                      |                 | 1.5                  | Informational Submittals (Coordinated Drawings, Product Test Reports, Evaluation & Field Quality Control Reports)   | No   |                             | No                 |                                 |
|  |           |                              |                      |                 | 1.6                  | Closeout Submittals - Maintenance Data: For finishes to include in maintenance manuals.   | Yes  | KH-01-GC-0036               | Incomplete         |                                 |
| 15.2   | 95113     | Acoustical Panel Ceilings    | General Construction | Renu Interiors  | 1.7                  | Maintenance Material Submittals -<br>A. Furnish extra materials that match products installed and that are packaged with protective covering for storage and identified with labels describing contents.<br>1. Acoustical Ceiling Units: Full-size panels equal to 2 percent of quantity installed.<br>2. Suspension-System Components: Quantity of each exposed component equal to 2 percent of quantity installed.<br>3. Hold-Down Clips: Equal to 2 percent of quantity installed. | Yes  | KH-01-GC-0036               | Incomplete         |                                 |
| 16   | 99123     | Interior Painting            |                      |                 | 1.4                  | Action Submittals (Product Data, Samples, Product Schedule)   | Yes  | KH-01-GC-0020               | Yes                |                                 |
|  |           |                              |                      |                 | 1.5                  | Maintenance Material Submittals -<br>A. Furnish extra materials that match products installed and that are packaged with protective covering for storage and identified with labels describing contents.<br>1. Paint Products: 5 percent, but not less than 1 gal. of each material and color applied.  | Yes  | KH-01-GC-0036               | Incomplete         |                                 |

## Kitchen Hoods Replacement – Rockland - Submittal Register – Page 02 of 04



**Jacobs**  
Challenging today.  
Reinventing tomorrow.

**Project Name : EAST RAMAPO CENTRAL SCHOOL DISTRICT**  
**Sub - Project Name : KITCHEN HOODS REPLACEMENT**  
**Client Name : EAST RAMAPO CENTRAL SCHOOL DISTRICT**  
**Contractor Name : ROCKLAND ELECTRIC**



| Submittals Required as per Contract |           |  |                         |   |           | Submissions on Kahua Till Date   |  |                     |                 |   |
|-------------------------------------|-----------|--|-------------------------|---|-----------|--|--|---------------------|-----------------|---|
| Sr. No.                             | Spec. No. | Spec. Name   | Contract                | Contractor Name   | Class No. | Submittal Name   | Submitted by Prime Contractor till date (Yes/No) | Submittal No.       | Approved by C&E | Remarks   |
| 1                                   | 20319     | Low-Voltage Electrical Power Conductors & Cables         | Electrical Construction | Rockland  | 1.1       | Product Data, Product Schedule, Quantity Take-Off, Field quality control reports               | Incomplete                                       | EH-01-EC-0010       | Yes             | Only product data for cables were submitted                                     |
| 2                                   | 20316     | Grounding & Bonding for Electrical Systems               |                         |   | 1.2       | Submittals - See below Snapshot  | Yes  | EH-01-EC-0011       | Yes             |   |
| 3                                   | 20319     | Hangers and Supports for Electrical Systems              |                         |   | 1.2       | Product data, Shop Drawings, Coordination Drawings   | Incomplete                                       | EH-01-EC-0012       | Yes             | Only product data submitted   |
| 4                                   | 20313     | Accessories and Boxes for Electrical Systems             |                         |   | 1.1       | Product data, Coordination Drawings  | Incomplete                                       | EH-01-EC-0013, 0014 | Yes             | Accessories not submitted. Boxes & Cords submitted. Only Product data submitted |
| 5                                   | 20354     | Shelves and Shelf Loads for Electrical Rooms and Cabling |                         |   | 1.1       | Product Data   | No   | -                   | No              |   |
| 6                                   | 20353     | Identification for Electrical Systems                    |                         |   | 1.1       | Product Data, Meeting/Status Schedule, Delivered - Design submittal for field-look-ahead study | No   | -                   | No              |   |
| 7                                   | 20210     | Wiring Devices   |                         |   | 1.1       | Product Data, Samples  | No   | -                   | No              |   |
| 8                                   | 20215     | Enclosed Switches and Circuit Breakers                   |                         |   | 1.2       | Product Data, Shop Drawings  | No   | -                   | No              |   |
|                                     |           |  |                         |   | 1.3       | Maintenance Material Submittals - See below Snapshot   | No   | -                   | No              |   |
| 9                                   | 20519     | LED Interior Lighting                                    |                         |   | 1.1       | Product Data, Shop Drawings, Product Schedule  | Incomplete                                       | EH-01-EC-0001       | Incomplete      | Only product data submitted   |
| 10                                  | 20100     | Fire Detector and Alarm, AIO #2                          | 1.1                     | Product Data, Shop Drawings   | Yes       | EH-01-EC-0009  | Yes  |                     |                 |   |
|                                     |           |  | 1.4                     | Closeout Submittals (Education & Maintenance Data) - See below Snapshot | Yes       | EH-01-EC-0014  | Yes  |                     |                 |   |

**Note :** Red Text represents Non Submission of Submittals Till date

**LEGEND:** For number mentioned below, refer serial number in above summary table & refer the snapshots respectively for Specification requirements

**10-->**

**A.** Operation and Maintenance Data for fire alarm systems and components to include in emergency, operation, and maintenance manuals. Include the following:

**RE DETECTION AND ALARM** 203100 - 2

Alarm: 203100 - 2

1. Comply with the "Accessories" section of the "Inspection, Testing and Maintenance" chapter in NFPA 72.

2. Provide "Fire Alarm and Emergency Communications System Record of Completion Document" according to the "Completion" document. Article of the "Documentation" section of the "Fundamentals" chapter in NFPA 72.

3. Complete wiring diagrams showing connections between all devices and equipment. Each conductor shall be numbered at every junction point with indication of origin and termination points.

4. Riser diagram.

5. Device address.

6. Record copy of inter-pairing software. This software shall also be in an electronic format to allow an alternate Authorized Distributor to add, change, or modify in any way the existing system data base.

7. Provide "Inspection and Testing Form" according to the "Inspection, Testing and Maintenance" chapter in NFPA 72, and include the following:

a. Equipment tested.

b. Frequency of testing of installed components.

c. Frequency of inspection of installed components.

d. Requirements and recommendations related to results of maintenance.

e. Manufacturer's user testing manuals.

8. Manufacturer's required maintenance related to system warranty requirements.

9. Alternative operating instructions for mounting on fire alarm control unit and each associated unit.

**08-->**

**1.3 MAINTENANCE MATERIAL SUBMITTALS**

**A.** Furnish extra materials that match products installed and that are packaged with protective covering for storage and identified with labels describing contents.

**ENCLOSED SWITCHES AND CIRCUIT BREAKERS** 202210 - 1

**SEARCH 209-2009** East Ramapo Central School District Kitchen Hood Replacement Project

1. Fuses: Equal to 10 percent of quantity installed for each size and type, but not fewer than three of each size and type.

2. Fuse Pullers: Two for each size and type.

**02-->**

**1.2 SUBMITTALS**


**A.** Minimum 1/8" scale floor plan drawings depicting the building ground electrode system as to be installed.

**B.** Detailed riser diagram depicting the building ground electrode system and bonding as to be installed.

**C.** Product data sheets (cut sheets) for all ground bus bars and other components of the grounding system.

**D.** Field test reports.

## Kitchen Hoods Replacement – Bertussi Contracting - Submittal Register – Page 03 of 04

| Jacobs                              |           | Project Name : EAST RAMAPO CENTRAL SCHOOL DISTRICT |                         | Sub - Project Name : KITCHEN HOODS REPLACEMENT   |            | Client Name : EAST RAMAPO CENTRAL SCHOOL DISTRICT  |  | Contractor Name : BERTUSSI CONTRACTING |                    |  |                             |
|-------------------------------------|-----------|--|-------------------------|--|------------|--|--|--|--------------------|---|-----------------------------|
| Submittals Required as per Contract |           |  |                         |  |            | Submissions on Kahua Till Date   |  |  |                    |   | Bertussi's Final Submission |
| Sr. No.                             | Spec. No. | Spec. Name   | Contract                | Contractor Name  | Clause No. | Submittal Name   | Submitted by Prime Contractor till date (Yes/NO) | Submittal No.                          | Approved by CSArch | Remarks   |                             |
| 1                                   | 230553    | Mechanical Identification                          | Mechanical Construction | Bertussi   | 1.2        | Action Submittals (Product Data, Egt. Label Schedule)  | No   | -                                      | No                 |   |                             |
| 2                                   | 230593    | Testing, Adjusting and Balancing                   |                         |  | 1.3        | A. Qualification Data: AABC or NEBB certification.<br>B. Written statement of coordination with sheetmetal contractor.<br>C. Written statement of coordination with piping contractor.<br>D. Written statement of acceptance of location and quantity of air and water balancing devices.<br>E. Final TAB reports. | Yes  | KH-03-MC-0005, 0001                    | Yes                |   |                             |
| 3                                   | 230713    | Duct Insulation                                    |                         |  | 1.2        | Action Submittals (Product data)   | Yes  | KH-03-MC-001, 004                      | Yes                |   |                             |
| 4                                   | 231113    | Metal Ductwork                                     |                         |  | 1.2        | Action Submittals (Product Data, Shop Drawings)  | Yes  | KH-03-MC-002, 003, 0016, 0017, 0022    | Yes                | KH-03-MC-022 resubmitted as shop/as built drawings                                  |                             |
|                                     |           |  |                         |  | 1.3        | Informational Submittals (Coordination Drawings)   | Yes  |  | Yes                |   |                             |
| 5                                   | 233300    | Air Duct Accessories                               |                         |  | 1.2        | Action Submittals (Product data)   | No   | -                                      | No                 |   |                             |
|                                     |           |  |                         |  | 1.3        | Closeout Submittals - Operation and Maintenance Data: For air duct accessories to include in operation and maintenance manuals.  | Yes  | KH-03-MC-0027                          | Incomplete         |   |                             |
| 6                                   | 233423    | Power Ventilators                                  |                         |  | 1.2        | Action Submittals (Product data)   | No   | -                                      | No                 |   |                             |
|                                     |           |  | 1.3                     | Closeout Submittals - Operation and Maintenance Data: For power ventilators to include in emergency, operation, and maintenance manuals. | No         | KH-03-MC-0027  | Incomplete                                       |  |                    |   |                             |
| 7                                   | 233534    | FIELD WELDED RECTANGULAR GREASE DUCTS              | Mechanical Construction | Bertussi   | 1.3        | Action Submittals (Product Data, Shop Drawings)  | Yes  | KH-03-MC-001, 003, 0016, 0017, 0022    | Yes                | KH-03-MC-022 resubmitted as shop/as built drawings                                  |                             |
|                                     |           |  |                         |  | 1.4        | Informational Submittals (Welding Certificates, Coordination Drawings)   | Yes  |  | Yes                |   |                             |
| 8                                   | 233713    | Grillers, Registers & Diffusers                    |                         |  | 1.2        | Action Submittals (Product Data, Samples)  | Yes  | KH-03-MC-0010                          | Yes                | Only Grills required.   |                             |
|                                     |           |  |                         |  | 1.4        | Action Submittals (Product Data, Shop Drawings)  | Yes  | KH-03-MC-0006, 0016, 0117, 0022        | Yes                | Shops submitted and approved for 11 schools   |                             |
| 9                                   | 233813    | Commercial Kitchen Hoods                           |                         |  | 1.5        | Informational Submittals (Welding Certificates, Coordination Drawings)   | Yes  | KH-03-MC-0022                          | Yes                | KH-03-MC-022 resubmitted as shop/as built drawings                                  |                             |
|                                     |           |  | 1.6                     | Maintenance Material Submittals - See below Snapshot   | Yes        | KH-03-MC-0027  | Incomplete                                       |  |                    |   |                             |

**Note :** Red Text represents Non Submission of Submittals Till date



**LEGEND:** Refer serial number in above summary table & snapshot respectively for Sepcification requirement.

**09 ---> 1.6 MAINTENANCE MATERIAL SUBMITTALS**

**A.** Furnish extra materials that match products installed and that are packaged with protective covering for storage and identified with labels describing contents.

**1.** Grease Filters/Baffles: One complete set(s).

## Kitchen Hoods Replacement – Mace Contracting - Submittal Register – Page 04 of 04

|  <b>Challenging today.<br/>Reinventing tomorrow.</b> |           | <u>Project Name : EAST RAMAPO CENTRAL SCHOOL DISTRICT</u><br><u>Sub - Project Name : KITCHEN HOODS REPLACEMENT</u><br><u>Client Name : EAST RAMAPO CENTRAL SCHOOL DISTRICT</u><br><u>Contractor Name : MACE CONTRACTING</u> |                       |                 |            |   |  |                        |                    |   |
|---|-----------|---|-----------------------|-----------------|------------|--|--|------------------------|--------------------|---|
| Submittals Required as per Contract   |           |   |                       |                 |            | Submissions on Kahua Till Date   |  |                        |                    |   |
| Sr. No.   | Spec. No. | Spec. Name  | Contract              | Contractor Name | Clause No. | Submittal Name   | Submitted by Prime Contractor till date (Yes/No) | Submittal No.          | Approved by CSArch | Remarks   |
| 1   | 220529    | Supports & Sleeves  | Plumbing Construction | Mace            | 1.4        | Product Data, Manufacturer Installation Instructions & Shop Drawings   | Incomplete                                       | KH-04-PC-003           | Yes                | Only product data submitted   |
| 2   | 220553    | Plumbing Identification   |                       |                 | 1.2        | Action Submittals (Product Data)   | Yes  | KH-04-PC-004           | Yes                |   |
| 3   | 271813    | Natural Gas Piping  |                       |                 | 1.5        | Action Submittals - Product Data: For each type of the following:<br>1. Piping specialties.<br>2. Valves. Include pressure rating, capacity, settings, and electrical connection data of selected models.<br>3. Pressure regulators. Indicate pressure ratings and capacities.<br>4. Directional fittings. | Incomplete                                       | KH-04-PC-005, 006, 007 | Yes                | KH-04-PC-005, 006, 007 - Submittal was submitted for pipes & valves |
|   |           |   |                       |                 | 1.6        | Closeout Submittals - Operation and Maintenance Data. For motorized gas valves and pressure regulators to include in emergency, operation, and maintenance manuals.  | No   | -                      | No                 |   |

Note :     **Red Text represents Non Submission of Submittals Till date**

## Phase 1A – MEP Package – RFI Log - To Date (Page – 1 of 3)

| Current Date  | 1/18/2024 | East Ramapo Central School District |           |   |  |           |   |
|---|-----------|-------------------------------------|-----------|---|--|-----------|---|
| TOTAL   | 033       |                                     |           |   |  |           |   |
| Due < 2 DAYS  |           |                                     |           |   |  |           |   |
| OVERDUE   |           |                                     |           |   |  |           |   |
| PHASE 1A - MEP - RFI LOG                            |           |                                     |           |   |  |           |   |
| Request for Information: 5 Business Days for Review |           |                                     |           |   |  |           |   |
| RFI No #  | School    | Date Submitted                      | Due Date  | GC - Question - 1   | CSArch - Answer - 1  | Returned  | Status  |
| 001   | Kalut     | 1/15/2024                           | 1/20/2024 | Drawing M14-20105: Demo note D411 calls for the existing lower assembly to be removed and for the level to remain. Detail 3 on Drawing S765 shows new LV's. Is a new list required only where new LV's are being installed where one did not exist previously?  | New lists are for new openings (where no LV existed before).   | 1/19/2024 | CLOSED  |
| 001   | Kalut     | 1/13/2023                           | 1/20/2023 | Is there a specification for the new list to be installed at new openings?  | Notes color, size, and texture to match existing with no discernable difference in finish from 10 feet away. See attached open section for recent history for additional information.  | 1/23/2023 | CLOSED  |
| 001   | Kalut     | 1/13/2023                           | 1/20/2023 | With most of the Refrigeration scope removed, can the condensing coils for the AC units that are to remain be retained on the exterior ground floor? All new condensing coils will be set on concrete pads. This will eliminate the need to do above so placement on the roof for new pads and penetrations.  | Energy does not recommend this, the condensers were intended to work as heat pumps and in the winter, they would need to be above snow line, being the location is right outside classroom windows noise will be an issue. Vandalism is also a concern for ground mounted equipment.   | 1/23/2023 |   |
| 001   | Kalut     | 1/13/2023                           | 1/20/2023 | With most of the refrigeration scope removed will the demolition of the existing electrical switchboard still be required? Can the power for the remaining new loads be handled from existing panels or is a new panel required (topped off the existing)?  | Scope of work indicated is to keep existing switchboard and tap for connection to new newboard to serve new circuits.  | 1/23/2023 | CLOSED  |
| 001   | Kalut     | 1/13/2023                           | 1/20/2023 | In the areas where ceiling removal and replacement is required has the ceiling material and materials above the ceiling been confirmed as Non-ACM or not?   | Yes, refer to report and Appendix A of the report.   | 1/29/2023 | CLOSED  |
| 001   | Kalut     | 1/13/2023                           | 1/20/2023 | Is any of the existing piping insulation ACM or PACM?   | Cruc Mashed: Above insulation was confirmed Non-ACM. Refer to report and Appendix A of the report.   | 1/23/2023 | CLOSED  |
| 001   | Kalut     | 1/15/2024                           | 1/20/2024 | Kalut: What happens for UV in Storage 001C Dwg E01.05 & E1.15   | Demolition of existing air handling feeding the gym. This is replaced with RTU.  | 1/19/2024 | CLOSED  |
| 001   | Kalut     | 1/13/2023                           | 1/20/2023 | Clarify that there does not need to replace Louver based on mechanical drawings and contrary to architectural.  | -  |           | INCOMPLETE  |
| 001   | Kalut     | 1/13/2023                           | 1/20/2023 | Review existing electrical feeders  | If referring to existing switchboard feeding existing LV's, energy does not recommend rerouting circuits. The condition of existing panelboards appears to be poor and new equipment should be connected to new circuits and panelboards to ensure needed installation.  | 1/23/2023 | INCOMPLETE RESPONSE (Architect's response to provide drawing no. & detail no.)                  |
| 001   | Kalut     | 1/13/2024                           | 1/20/2024 | Kalut Meeting: UV in electrical drawings: One shows 74, math shows 75. Electrical drawings skip 54 on the schedule, and skip 55 on the drawings.  | Unit UV is added to electrical scope.  | 1/19/2024 | INCOMPLETE RESPONSE (Architect's response to provide additional notes)                          |
| 001   | Kalut     | 1/13/2024                           | 1/20/2024 | For UV replacements, can wall boxes be reused & not replaced?   | In general, we want to design around new backboxes being required and if the existing can be reused, the contractor should submit an RT at that time including existing box conditions and also being adequate for reuse. I would not design around reusing something like that (panel case).  | 1/19/2024 | CLOSED  |
| 001   | Kalut     | 1/13/2023                           | 1/20/2023 | What possibilities, if any, exist for work access to indoor work areas PRIOR to conclusion of classes in June? For example, could some, any classroom wings be made available in June?  | We have asked the district this question and have not heard back from the district yet. In order for the district to understand the type of access Trans is looking for prior to the end of the school year can Trans provide a narrative of the type of construction activities they anticipate performing prior to the end of the school year? | 1/23/2023 | INCOMPLETE RESPONSE (No classrooms are available for construction outside of the summer window) |
| 001   | Margate   | 1/13/2023                           | 1/20/2023 | Drawing M15-20201: Demo note D411 calls for the existing lower assembly to be removed and for the level to remain. Detail 3 on Drawing S765 shows new LV's. Is a new list required only where new LV's are being installed where one did not exist previously? From a time aspect, Trans recommends creating and reusing existing sources.  | New lists are for new openings (where no LV existed before).   | 1/23/2023 | CLOSED  |
| 001   | Margate   | 1/13/2023                           | 1/20/2023 | Is there a specification for the new list to be installed at new openings?  | See response for Kalut.  | 1/23/2023 |   |
| 001   | Margate   | 1/13/2023                           | 1/20/2023 | With most of the Refrigeration scope removed, can the condensing coils for the AC units that are to remain be retained on the exterior ground floor? All new condensing coils will be set on concrete pads. This will eliminate the need to do above so placement on the roof for new pads and penetrations.  | Similar response to that at Kalut, Energy does not recommend.  | 1/23/2023 |   |
| 001   | Margate   | 1/13/2023                           | 1/20/2023 | With most of the refrigeration scope removed will the demolition of the existing electrical switchboard still be required? Can the power for the remaining new loads be handled from existing panels or is a new panel required (topped off the existing)?  | Switchboard replacement not required. Will revise scope to indicate connection to existing switchboard.  | 1/23/2023 | INCOMPLETE RESPONSE   |
| 001   | Margate   | 1/13/2023                           | 1/20/2023 | In the areas where ceiling removal and replacement is required has the ceiling material and materials above the ceiling been confirmed as Non-ACM or not?   | Yes, refer to report and Appendix A of the report.   | 1/29/2023 | CLOSED  |
| 001   | Margate   | 1/13/2024                           | 1/20/2024 | Is any of the existing piping insulation ACM or PACM?   | Yes, refer to report and Appendix A of the report.   | 1/19/2024 | CLOSED  |
| 001   | Margate   | 1/13/2023                           | 1/20/2023 | With the AC being removed, and the possibility of not requiring an electrical service upgrade, can the existing feeders to the LV's be reused rather than dem'd and replaced?   | We do not recommend rerouting circuits. The condition of existing panelboards appears to be poor and new equipment should be connected to new circuits and panelboards to ensure needed installation.  | 1/19/2023 | INCOMPLETE RESPONSE (Architect's response to provide drawing no. & detail no.)                  |
| 001   | Margate   | 1/13/2023                           | 1/20/2023 | Please confirm if there are existing LV's that are not shown on M13.12 that need to be removed  | Those are new Unit Ventilators.  | 1/23/2023 | INCOMPLETE RESPONSE   |
| 001   | Margate   | 1/13/2023                           | 1/20/2023 | For UV replacements, can wall boxes be reused & not replaced?   | In general, we want to design around new backboxes being required and if the existing can be reused, the contractor should submit an RT at that time including existing box conditions and also being adequate for reuse. I would not design around reusing something like that (panel case).  | 1/23/2023 | CLOSED  |
| 001   | Margate   | 1/13/2023                           | 1/20/2023 | What possibilities, if any, exist for work access to indoor work areas PRIOR to conclusion of classes in June? For example, could some, any classroom wings be made available in June?  | We have asked the district this question and have not heard back from the district yet. In order for the district to understand the type of access Trans is looking for prior to the end of the school year can Trans provide a narrative of the type of construction activities they anticipate performing prior to the end of the school year? | 1/23/2023 | INCOMPLETE RESPONSE (No classrooms are available for construction outside of the summer window) |
| 001   | Margate   | 1/14/2024                           | 1/20/2024 | The current drawings show demolition of 4 ACU. The ACU is currently a unit that serves the gym, cafeteria, and the corridor wall space for the windows. The new drawings don't show anything going back to serve the corridor wall space. What is the plan for the corridor ventilation and heat?   | -  |           |   |
| 001   | Margate   | 1/14/2024                           | 1/20/2024 | Classroom 6, 7 & 8 have 21" radiators with glass. Can you please provide a detail on how you want to handle the window modification in this space?  | The windows for Classrooms 6, 7 and 8 are to be replaced in a future phase of work and the window sill/seat is scheduled to be moved to accommodate the LV height at that time. Can the interior of the LV's in these spaces be held off until the control of the windows are completed in these classrooms?                                     | 1/17/2024 | INCOMPLETE RESPONSE (Architect's response to provide drawing no. & detail no.)                  |
| 001   | Margate   | 1/14/2024                           | 1/20/2024 | The static condition of the piping configuration is that the fin tube reduction and UV are piped in series. Can you please provide a detail outlining the UV piping for this.   | See attached sketch.   | 1/17/2024 | CLOSED  |
| 001   | Margate   | 1/13/2023                           | 1/20/2023 | The static condition shows that all valves are 2-way valves. The current drawings have those all being changed to 3-way valves. Is the full system ready to be connected to control valve system with this change?  | Yes, these points have a V but the variable speed controls are not there (and there is no bypass in boiler room). Instead of doing boiler room modifications to make this a variable speed system are proposed using 3-way valves.   | 1/23/2023 | CLOSED  |
| 001   | Margate   | 1/13/2023                           | 1/20/2023 | The static condition shows that behind the LV's and radiators in classroom there is an open piping line across the entire length of the classroom to feed the unit with Outside air. Can you please clarify how the new Calentory and LV's are to be installed to account for this open piping?   | Can you please send us pictures of the situation you are referring to.   | 1/23/2023 | INCOMPLETE RESPONSE   |
| 001   | Margate   | 1/25/2023                           | 1/26/2023 | For the control system it shows integration into the old chiller system. Due to the fact that the HVAC is going to be controlled and controlling on top of it is as someone in the room focus the control of this integration is needed to the control. We propose providing a local open protocol platform for the new equipment and making the old system in place. All parameters will be copied in place. For the time being before the CPC comes in to pull it into the computer system the district will have two systems. From working with the district could they find no problem with this view to the fact that they do not use the existing system currently. | Amesbury's plan for the CPC is to install a Tridium Niagara 4 system and to reduce the temporary controllers from Metasys to Tridium and have one from end interface for all schools.  | 1/26/2023 | CLOSED  |
| 001   | Kalut     | 1/25/2023                           | 1/26/2023 | Is this supposed to get cooling as shown?   | No, that condenser boiler ACU-35 on the schedule was a typo. That room is not getting cooling.   | 1/26/2023 | CLOSED  |

## Phase 1A – MEP Package – RFI Log - To Date (Page – 2 of 3)

| Current Date | 1/18/2024        | East Ramapo Central School District                 |           |   |   |           |   | Jacobs |  |
|--------------|------------------|---|-----------|---|---|-----------|---|--------|--|
| TOTAL        | 033              | PHASE 1A - MEP - RFI LOG                            |           |   |   |           |   |        |  |
| Due < 2 DAYS |                  | Request For Information: 5 Business Days for Review |           |   |   |           |   |        |  |
| OVERDUE      |                  |   |           |   |   |           |   |        |  |
| RFI No #     | School           | Date Submitted                                      | Due Date  | GC - Question - 1   | CSArch - Answer - 1   | Returned  | Status  |        |  |
| 003          | Kalut            | 1/23/2023   | 1/23/2023 | Where is electrical coming from with server upgrade roomed from scope. Please either provide updated panel schedules, or ideally, update electrical drawings. This is for both schools.   | Updated electrical drawings should be sent this week for Margate and Kalut.   | 2/2/2023  | INCOMPLETE RESPONSE   |        |  |
| 003          | Kalut            | 1/23/2023   | 1/23/2023 | Is the make conditions of the piping configuration is that the flexible radiations and UV are piped in series. Can you please provide a detail including the UV piping for this.  | See attached sketch in the response file.   | 2/2/2023  | CLOSED  |        |  |
| 004          | Kalut            | 1/19/2024   | 1/19/2024 | The create condition shows that all valves are 2way valves. The current drawings have these all being changed to 3 way valves. Is the hot water system ready to be converted to constant volume systems with this change?   | Yes, these pumps have a VFD but the variable speed controls are not there (and there is no bypass or boiler knock). Instead of doing boiler room modifications to make this a variable speed system we proposed using 3 way valves.   | 1/19/2024 | CLOSED  |        |  |
| 005          | Kalut            | 1/23/2023   | 1/23/2023 | Is the system at Kalut in showing carbon monoxide detection. Is this supposed to be carbon dioxide?   | No, this is a gas that RFL so we need the Carbon monoxide sensors. In general, we used occupancy sensors (not CO2) for COV on this project.   | 2/2/2023  | CLOSED  |        |  |
| 009          | Kalut            | 1/23/2023   | 1/23/2023 | A1000 note #6 are we responsible for designing a P&M risk and all the other notes?  | Please provide drawing reference, A2001 is an elevation drawing.  | 2/2/2023  | INCOMPLETE (CONTRACTOR TO CLARIFY)  |        |  |
| 003.1        | Kalut            | 2/7/2023  | 2/12/2023 | P&M risks are in Rooms 130C and 224C. On drawings 1002 and 1004.  |   |           | INCOMPLETE (CONTRACTOR TO CLARIFY)  |        |  |
| 004          | Kalut            | 1/17/2024   | 1/16/2024 | There is a discrepancy between the new work in classroom A11 for horizontal UV in classroom 116, A112, A113, 117 shows removal of old doors in rooms 130/137 and the existing UVs are on high hanger. If there is no electricity going back, why remove radiators? Also, some drawings, The UVs not shown for Demo in Room 130/137  | Remove ceiling mounted UVs in Classroom 136 and Classroom 137 as indicated in Mechanical drawing MODULA and drawing A4011. Existing radiator covers to remain.  | 1/17/2024 | CLOSED  |        |  |
| 005          | Kalut            | 1/23/2023   | 1/23/2023 | The create condition shows that behind the UV's and radiators in classrooms there is an open plenum box across the entire length of the classroom to feed the unit with Outside air. Can you please clarify how the new Cabinetry and UV's are to be installed to account for the open air plenum?  | Can you please send in pictures of the situation you are referring to.  | 2/2/2023  | INCOMPLETE RESPONSE   |        |  |
| 003.2        | Kalut            | 2/7/2023  | 2/12/2023 | Room 204, the boiler is clearly in front of its tube radiation, and behind a double wall of sheetrock and plywood, not behind a UV. We have looked out the window and there is no boiler directly behind the UV. Plaster is attached.   |   |           |   |        |  |
| 005          | Kalut            | 1/23/2023   | 1/23/2023 | A1011, classrooms 11, 12, & 14 show no doors for ceiling hung UV's. The other sections show ceiling hung UV's in open.  | Remove ceiling mounted UVs per Mechanical Drawing MOD115.   | 2/2/2023  | Include key notes   |        |  |
| 009          | Kalut            | 1/23/2023   | 1/23/2023 | For the controls system it shows integration into the old common system. Due to the fact that the EPC is going to be coming in and overlaying on top of this at some point in the near future the cost of this integration is a waste to be different. We propose providing a hardwired control platform for the new equipment and leaving the old system in place. All parameters will be copied in place. For the time being before the EPC comes in to pull it into the common system the district will have two systems. From speaking with the district stakeholders they had no problem with this due to the fact that they do not use the existing system currently. | Amesbury's plan for the EPC is to install a Tridium Niagara 5 system and to replace the supervisory controllers from Medaris to reduce and have one front end interface for all schools.  | 2/2/2023  | CLOSED  |        |  |
| 004          | Kalut & Margate  | 2/7/2023  | 2/14/2023 | The project scope includes running new power circuits in B1. There plans to abandon all existing conduit, conductors, etc. in place. This will both save time and cost on the overall project installation.   | ENRSEA does not recommend abandoning existing wiring. All wiring should be removed back to source conductors, sheathed in conduit, cable, abandoned and cut and capped below to floor. COORDINATE ADDITIONAL EHS REQUIREMENTS WITH AECI/ECT.  | 2/25/2023 | INCOMPLETE (FOR TO CLARIFY)   |        |  |
| 001          | Kalut & Margate  | 2/7/2023  | 2/14/2023 | Please advise if it is acceptable to utilize MC feeder cable for panel board feeders where concealed. This will reduce the quantity of tubing needed associated with the feeder installation and provide a cost savings to the district. Conduit & wire would be utilized where exposed in areas such as the boiler rooms or main electrical rooms.   | ENRSEA TAKES NO EXCEPTION. ARCHITECT TO ADVISE IF SCHOOL DISTRICT OBJECTS TO MC CABLE IN CONCEALED LOCATIONS.   | 2/25/2023 | INCOMPLETE (FOR TO CLARIFY)   |        |  |
| 005          | Ramapo HS        | 2/7/2023  | 2/14/2023 | Who is the fire alarm vendor for the districts for all schools in phase 1   | Ramapo HS - testing fire Alarm Control Panel is in room 116 (bicycleway). Periodic test - J. (Not do not know who services the system).   | 2/15/2024 | INCOMPLETE RESPONSE   |        |  |
| 001          | Ramapo HS        | 2/7/2023  | 2/14/2023 | What is the highest if any in the hot water at all districts  | -   |           |   |        |  |
| 005          | Ramapo HS        | 2/7/2023  | 2/14/2023 | What is the % slope for the chilled water systems at high school  | Upward or parallel at Spring Valley HS for the new chiller. We are specifying 1/8" per foot. This matches the design documents from 2007 when the chiller were installed.   | 2/15/2023 | CLOSED  |        |  |
| 005          | Ramapo HS        | 2/14/2023   | 2/21/2023 | Who is the outside telecon/security vendor utilized by the school or if it is performed in house as it relates to camera and all other telecon associated with ceiling dome/camera system.  | The district utilized Intralogic Solutions for the recent IT & security upgrades to Ramapo HS. They worked very closely with ENRSEA Director of IT and Cyber Security, Bhavir Gandhi (bhavirgandhi@enrsea.org) and Coordinator of Safety and Security/SFO Tom Carter (tcarter@enrsea.org), during the upgrade process. Please coordinate with them for additional information.  | 2/14/2023 | CLOSED  |        |  |
| 005          | Ramapo HS        | 2/14/2023   | 2/21/2023 | Provide specifications for lighting fixtures such as 2x4, 2x6, etc. as it is impractical and cost prohibitive to remove, store & reinstall. Fixtures where new ceilings are being provided.   | The scope is to carefully remove, store, and re-install all existing fixtures as there is no budget to do new fixtures. Contractor to proceed with scope as indicated on drawings.  | 2/14/2023 | CLOSED  |        |  |
| 007          | Kalut            | 2/17/2023   | 2/24/2023 | Please provide a description or detail of a covered penthouse, including site required.   | Greenheck WH Model with three dimensions 28x38. See following images for additional.  | 3/7/2023  | CLOSED  |        |  |
| 008          | All 4 Schools    | 2/17/2023   | 2/24/2023 | Confirming that ProPress and Zoomlock fittings can be used on all copper piping installations throughout the work at Kalut, Margate, Ramapo HS, and Spring Valley HS.   | Viega ProPress and Parker Zoomlock M&M are acceptable for copper pipe fitting. ProPress valves on the boomer valve box. Zoomlock P&B and other non-manual fitting systems are not permitted.  | 2/17/2023 | CLOSED  |        |  |
| 009          | Margate          | 2/20/2023   | 2/27/2023 | Is EPC for Margate meant to be a Mitsubishi Lossnay unit? It is mounted on the roof and to my knowledge, Mitsubishi does not make outdoor rated units.  | ERV 1 should be a Renewables Ev450ERT Unit. Mechanical schedule to be updated immediately. Data sheet / Specification sheet attached.   | 2/21/2023 | CLOSED  |        |  |
| 010          | High Schools     | 2/24/2023   | 3/2/2023  | Please advise if it is acceptable to utilize MC feeder cable for panelboard feeders where concealed. This will reduce the quantity of tubing needed associated with the feeder installation and provide a cost savings to the district. Conduit & wire would be utilized where exposed in areas such as the boiler rooms or main electrical rooms.  | Yes, MC feeder cable, with equivalent copper conductors to those indicated for conduit and wire feeders will be acceptable where installed concealed above accessible ceiling. Use only conduit and wire where feeders are not exposed in mechanical and electrical rooms, and storage rooms and similar rooms with exposed structure (no suspended ceiling).   | 3/15/2023 | CLOSED  |        |  |
| 011          | High Schools     | 2/24/2023   | 3/2/2023  | There are two pairs of new W44000 beams shown to be installed below roof level. If possible, can these beams be designed to be installed above roof, essentially as exterior drimage, in order to minimize the work in the ceiling and avoid having to saw 35' long beams and 42' long beams through the interior rooms.  | Remove 1x10 drawing 14011 does not specify any W44000 beams. W44000 members are specified and span less than 17'. Please verify use of most up to date drawings. We recommend supporting ERV 1 and ERV 2 on the roof level rather than creating an elevated drimage system that would need to span in existing columns. Adding a ramp would require additional framing members and become more complex than the proposed design. Lateral bracing would need be considered likely adding horizontal bracing and potentially diagonal bracing. ERV 1 and ERV 2 (page 3 of this RFI) are located in the mechanical room not on the roof. | 3/1/2023  | Closed. VE action was not accepted by EOR and will increase overall project cost. |        |  |
| 012          | Kalut            | 2/24/2023   | 3/2/2023  | UV/IR in the burner's office at Kalut is called out on the drawings schedule as horizontal, but is shown as vertical with casework on the drawings. On Page M113.   | Correct that is a typo in the mechanical schedule. This should be a 1000 CFM Vertical Unit Ventilator. Updated drawings will reflect this change.   | 3/7/2023  | CLOSED  |        |  |
| 014          | Ramapo HS        | 2/17/2024   | 3/6/2024  | I was in for Margate HS. We would like to mount the structural steel on the roof (to) restore the roof below the deck. Trying to swing large steel beams inside an occupied space will be a very difficult task. Having the steel on the roof and all the work with tying, cast, and the extent of ceiling removal in the space. If used beams not suitable would be preferable. If you need more info, please let me know.   | Please refer to current drawing dated 2/14/23 which specify different construction that what is shown on the attached sheets. We recommended supporting ERV 1, ERV 2 and ERV 3 at the roof level rather than creating an elevated drimage system that would need to span in existing columns. Adding a ramp would require additional framing members and become more complex than the proposed design. Lateral bracing would need be considered likely adding horizontal bracing and potentially diagonal bracing. ERV 1 and ERV 2 (page 3 of this RFI) are located in the mechanical room not on the roof.                           | 3/19/2024 | CLOSED  |        |  |
| 014          | Margate          | 3/1/2023  | 3/8/2023  | Resolving details for how the ring near would that the existing baseboard radiation system must be to be in the new construction UVs. There are 8 ERV's with this condition.  | See for tube to UV Piping Schematic detail.   | 3/21/2023 | CLOSED  |        |  |
| 015          | Kalut & Margate  | 3/1/2023  | 3/8/2023  | Please provide a specification on what is required for hard surface countertops at the 2 elementary schools so the design and install can be priced.  | The technical specification for the countertops will be provided with the project manual. The task of design for counter material is one of the following manufacturers: a. Green Solid Surface, DuPont, DuPont de Nemours, Inc. b. LG Triton, LTD. c. Williams, LLC. Colors and patterns as selected by architect from manufacturer's full range. See drawings dated 1/14/2023 for details.  | 3/15/2023 | CLOSED  |        |  |
| 016          | Kalut & Margate  | 3/1/2023  | 3/8/2023  | Please provide updated electrical drawings so electrical can be priced in accordance with the most up to date drawings. Existing electrical drawings are dated August 2007.   | See electrical drawings for Margate and Kalut ES which are dated 02/14/2023 and were issued to Trane via New Forms for transfer on 02/10/2023.  | 3/13/2023 | CLOSED  |        |  |
| 017          | Spring Valley PS | 3/15/2023   | 3/22/2023 | Please confirm the grt's gym does not have asbestos wall covering. The grt's gym has the same style plaster on the walls as the boy's gym, and the boy's gym was built later and is sealed in having asbestos containing plaster.   |   |           |   |        |  |

## Phase 1A – MEP Package – RFI Log - To Date (Page – 3 of 3)

| Current Date  | East Ramapo Central School District |                |            |  |  |            |        | Jacobs |
|---|-------------------------------------|----------------|------------|--|--|------------|--------|--------|
| TOTAL   | 033                                 |                |            |  |  |            |        |        |
| Due < 2 DAYS  |                                     |                |            |  |  |            |        |        |
| OVERDUE   |                                     |                |            |  |  |            |        |        |
| PHASE 1A - MEP - RFI LOG                            |                                     |                |            |  |  |            |        |        |
| Request For Information: 5 Business Days for Review |                                     |                |            |  |  |            |        |        |
| RFI No #  | School                              | Date Submitted | Due Date   | GC - Question - 1  | CSArch - Answer - 1  | Returned   | Status |        |
| 018   | Margetts                            | 3/16/2023      | 3/23/2023  | Please provide the spec of the grille in drawing A202.   | The technical specification for the Grilles will be provided with the project manual. The basis-of-design product shall be Architectural Grille (provide aluminum bar grille, Type 17, full face frame) or comparable products by Precision Metal Fabricators, Regglo-Register Company. Grille sizes shall coordinate with lengths and locations of existing fin-tube radiation elements, verify width with field conditions.  | 3/21/2023  | CLOSED |        |
| 019   | Margetts                            | 3/29/2023      | 4/5/2023   | Please clarify what note DC-8 should be. It is not noted on the drawings.  | DC8 - SELECTIVE CEILING DEMOLITION TO ACCOMMODATE MECH WORK. COORDINATE WITH MEC FOR LOCATION. REFER TO MECO DRAWINGS FOR MORE INFORMATION.  | 4/10/2023  | CLOSED |        |
| 020   | Spring Valley HS                    | 4/7/2023       | 4/14/2023  | Please confirm via testing that room 13A, Boys Toilet in the girls gym does not have transite panel asbestos containing ceiling. This situation looks suspiciously similar to the ceiling in storage 10A near the girls locker room in the girls gym, which is confirmed Transite Panels containing asbestos. This condition may be existing in other bathrooms in the area as well, which we will likely be working in.   |  |            |        |        |
| 021   | Spring Valley HS                    | 4/7/2023       | 4/14/2023  | Trane recommends reusing the ductwork in the girls gym. The current ductwork goes through steel beams which the new ductwork will be required to transition through. This may cause airflow issues at the transitions. Also, the gym is not on grade, so using man lifts is not feasible since the floor will likely not support them. This will require all the demo and installation of new ductwork to be completed from baker scaffold, which is much more time consuming, and adds extra safety requirements.   | The existing ductwork and diffusers are in bad shape and need to be replaced. The existing ductwork transitions through the steel can be reused. Provide new ductwork with new registers/grilles as designed between the steel. Existing ductwork to remain shall be thoroughly cleaned prior to connection with new ductwork and reuse. All ductwork shall be cleaned prior to painting in accordance with the specifications.  | 4/26/2023  | CLOSED |        |
| 022   | Spring Valley HS                    | 4/7/2023       | 4/14/2023  | In the weight room the H&V units are mounted high in the air, in hard to access the closets. The H&V-58 unit is located in a confined space, which add to the safety requirement of the project. H&V-5A is in located 13-20 feet in the air in a closet, which can only be access via a baker scaffold. Trane recommends abandoning the unit in place, with the ductwork cut and capped, the electrical safed off and the piping drained and isolated from the unit. The new unit is expected to be floor mounted per the drawings, so leaving the existing units in place will not interfere with the new unit. | Remove all equipment, piping and ductwork as shown on documents. H&V-5A cannot stay in place as it will interfere with new ductwork and connection to GH tower.  | 4/10/2023  | CLOSED |        |
| 023   | Spring Valley HS                    | 4/7/2023       | 4/14/2023  | Please confirm if any mechanical demo is being done in the offices circled on the snippet below. Currently ceilings are shown as being removed, but I cannot find any drawings showing mechanical demo in this space, just new work going back. Drawing is M111. It seems like there is existing ductwork in this space.   | Yes, there is removals of all ductwork located above the ceilings in this area that is associated with EC-12 and EF-12A. A supplemental instruction will be issued.  | 4/11/2023  | CLOSED |        |
| 024   | Kakiat & Margetts                   | 4/12/2023      | 4/19/2023  | Please provide AHJRA Reports for Margetts and Kakiat   | The AHJRA Reports are available in the Facilities Office located in the District Central Administration Building, located at 305 S. Madison Avenue, Spring Valley, NY 10977. Make an appointment with the Facilities (tel: 845-577-6580) Department to view the AHJRA Reports.   | 4/27/2023  | CLOSED |        |
| 025   | Spring Valley HS                    | 5/8/2023       | 5/16/2023  | Please provide the quantity of glycol (gallons) for the chilled water and hot water systems.   | CLOSED / Void  |            |        |        |
| 026   | Kakiat & Margetts                   | 10/4/2023      | 10/11/2023 | Please provide the AIA billing requirements for Kakiat and Margetts  | Review the following sections of the Project Manual:<br>Section 012900 - Payment Procedures<br>Section 012973 - Schedule of Values<br>In addition review the following AIA Documents:<br>AIA G732 - Application for Payment (see Project Manual Section 006276.01)<br>AIA G703 - Continuation Sheet (see Project Manual Section 006276.02)   | 11/1/2023  | CLOSED |        |
| 027   | Margetts                            | 10/19/2023     | 10/25/2023 | VRF cassettes are to be installed in 3 offices. Have the ceilings been tested and do they contain ACM in the following offices:<br>Resource Room 28, Speech Room 28 and Psych Office Room 33   |  |            |        |        |
| 028   | Kakiat                              | 10/19/2023     | 10/26/2023 | What is the flow rate for the circuit setters on the baseboard in CIC-01   | Use the same GPM as listed on unit ventilator schedule under heating coil performance. Classroom 108 is 1 of 4 classrooms that will have to be re-piped as shown in SK-1 detail, but the existing UV is not getting replaced. That circuit setter should be set to 9.18 GPM.   | 11/9/2023  | CLOSED |        |
| 029   | All 4 Schools                       | 11/9/2023      | 12/16/2023 | Please provide the following information:<br>Owner's Environmental Consultant / Air Monitoring company. Please include: NYCDEP filing, email address and ELAP# for laboratory to be used for analysis.   |  |            |        |        |
| 030   | Kakiat                              | 11/14/2023     | 11/21/2023 | Conflict in drawing regarding louver replacement   | Exterior louvers are required as part of the base bid at no additional cost to the owner. Specification Section 238223 Section 2.3 requires the installation of a new intake louver. Also, refer to the following drawings:<br><br>KES M000 - HVAC/Sheet Metal Notes 18 & 19. Note 18 indicates that exterior louvers are indicated for information only and directs the contractor to the architectural drawings for additional information. Note 19 requires that the louver sizes, locations, and details are coordinated with the GC.<br>Sheet KES M501 UV Schedule Note 2 and Note 6 indicates the use of existing outdoor air louvers unless otherwise noted – It was noted on the architectural drawings.<br><br>The architectural drawings require the clean-out and removal of bird screen how is that to be accomplished without the removal of the existing louver? Proper UV install requires that louver to be present directly and interface with the UV intake, provide a proper seal, along with keeping debris, moisture and vermin out of the building. How is this to be done with the existing louver? | 11/16/2023 | CLOSED |        |
| 031   | All 4 Schools                       | 11/15/2023     | 12/22/2023 | Mechanical drawing M501, air cooled condenser schedule calls for ACCU#7 to be 4-ton, single phase. Note on approved submittals from 11/3/23 want ACCU#7 condenser tonnage to be increased to 6 tons which is three phase. Two concerns: U.V.#7 cfm rating is 2000 which may not be enough for 6 tons of cooling. Is there adequate power in the designated ACCU panel for three phase.   | UV Schedule shows UV#7 evaporator coil capacity as 68.41 MBH (5.7 Tons) at 2000 CFM. The condensing unit had a nominal condensing coil capacity of 4 tons (1-5 ton range). Most application guides we found advised against a mismatch of this magnitude for indoor comfort/longevity of equipment purposes. If Trane feels they can appropriately install a system with this arrangement and keep equipment under warranty and operating appropriately, we can amend our comment. RP-1 has ample capacity. ACCU-7 is replacing ACCU-27 on RP-1 (ECC library changed rooms), which was designed 3 phase  | 12/27/2023 | CLOSED |        |
| 032   | Kakiat & Margetts                   | 12/22/2023     | 12/29/2023 | Request for full set of CAD drawings for both Kakiat and Margetts schools.   |  |            |        |        |
| 033   | Margetts                            | 12/28/2023     | 1/4/2024   | Following Rooms on ED111 do not currently have any electrical circuitry, however contract drawings depict a disconnect/reconnect. R28A, OT/PT & R35, R39 Reading   |  |            |        |        |





## Phase 1A – MEP Package – Submittal Log – To Date (Page – 1 of 1)

| Current Date                                     | 1/18/2024   | East Ramapo Central School District |                |                  |               |             |              |  | <div>Jacobs</div> |
|--|---|-------------------------------------|----------------|------------------|---------------|-------------|--------------|--|-------------------|
| TOTAL  | 32  | Phase 1A MEP - Submittal Log        |                |                  |               |             |              |  |                   |
| Due < 2 DAYS                                     |   |                                     |                |                  |               |             |              |  |                   |
| OVERDUE  |   |                                     |                |                  |               |             |              |  |                   |
| TO CONTRACTOR                                    |   |                                     |                |                  |               |             |              |  |                   |
| Initial Review: 10 WD/ Re Submittal Review: 7 WD |   |                                     |                |                  |               |             |              |  |                   |
| Submittal Spec Section / Submittal No.           | Description   | School                              | Date Submitted | Due Date (10 WD) | Date Returned | Status -000 | Final Status |  |                   |
| 238223/001                                       | Metal Storage Shelving Systems                            | Margetts ES                         | 3/22/2023      | 4/5/2023         | 4/21/2023     | AAN         | AAN          |  |                   |
| 236200/001                                       | Variable Refrigerant Volume Systems (VRF)                 | Kakiat ES                           | 2/13/2023      | 2/27/2023        | 3/31/2023     | AAN         | AAN          |  |                   |
| 236200/002                                       | Variable Refrigerant Volume Systems (VRF)                 | Margetts ES                         | 2/13/2023      | 2/27/2023        | 3/31/2023     | AAN         | AAN          |  |                   |
| 236423/001                                       | Scroll Water Chillers - Air Cooled                        | Spring Valley HS, Ramapo HS         | 3/22/2023      | 4/5/2023         | 4/25/2023     | NET         | NET          |  |                   |
| 237223/001                                       | Packaged Rooftop DOAS Unit with Energy Recovery           | Ramapo HS                           | 3/17/2023      | 3/31/2023        | 4/14/2023     | NET         | NET          |  |                   |
| 237223/002                                       | Packaged Rooftop DOAS Unit with Energy Recovery           | Spring Valley HS                    | 3/21/2023      | 4/4/2023         | 4/19/2023     | AAN         | AAN          |  |                   |
| 237413/001                                       | Packaged Rooftop Air Conditioning Units                   | Spring Valley HS, Ramapo HS         | 3/21/2023      | 4/4/2023         | 4/6/2023      | NET         | NET          |  |                   |
| 237416.14/001                                    | Packaged Rooftop Units with Energy Recovery               | Kakiat ES                           | 3/10/2023      | 3/24/2023        | 3/10/2023     | NET         | NET          |  |                   |
| 237416.14/002                                    | Packaged Rooftop Units with Energy Recovery               | Margetts ES, Elemwood ES            | 3/10/2023      | 3/24/2023        | 3/13/2023     | NET         | NET          |  |                   |
| 238129/001                                       | Variable Refrigerant Flow System - Shop Drawings RHS VRF  | Spring Valley HS, Ramapo HS         | 3/13/2023      | 3/27/2023        | 5/11/2023     | AAN         | AAN          |  |                   |
| 238129/002                                       | Variable Refrigerant Flow System - SVHS ACCU-2 VRF System | Spring Valley HS                    | 3/30/2023      | 4/13/2023        | 4/19/2023     | AAN         | AAN          |  |                   |
| 238129/003                                       | Variable Refrigerant Flow System - PD ACCU-1              | Ramapo HS                           | 4/2/2023       | 4/16/2023        | 4/19/2023     | AAN         | AAN          |  |                   |
| 238129/004                                       | Variable Refrigerant Flow System - PD ACCU-1              | Spring Valley HS                    | 4/2/2023       | 4/16/2023        | 4/21/2023     | AAN         | AAN          |  |                   |
| 238216/002                                       | Coils - Shop Drawings                                     | Spring Valley HS, Ramapo HS         | 4/2/2023       | 4/16/2023        |               |             |              |  |                   |
| 238216/003                                       | Coils - Resubmittal - Product Data                        | Spring Valley HS, Ramapo HS         | 4/26/2023      | 5/10/2023        | 5/5/2023      | NET         | NET          |  |                   |
| 238219/001                                       | Blower Coil Units   | Spring Valley HS, Ramapo HS         | 3/13/2023      | 3/27/2023        | 5/11/2023     | MCN         | MCN          |  |                   |
| 238223/001                                       | Unit Ventilators  | Margetts ES                         | 2/23/2023      | 3/9/2023         | 2/23/2023     | AAN         | AAN          |  |                   |
| 238223/002                                       | Unit Ventilators  | Kakiat ES, Elemwood ES              | 3/10/2023      | 3/24/2023        | 3/21/2023     | R&R         | R&R          |  |                   |
| 238239/001                                       | Unit Heaters  | Spring Valley HS, Ramapo HS         | 3/30/2023      | 4/13/2023        | 5/10/2023     | AAN         | AAN          |  |                   |
| 237313/001                                       | Air Handling Units  | Spring Valley HS                    | 4/3/2023       | 4/17/2023        | 5/8/2023      | R&R         | R&R          |  |                   |
| 237313/002                                       | Air Handling Units  | Ramapo HS                           | 4/3/2023       | 4/17/2023        | 5/8/2023      | R&R         | R&R          |  |                   |
| 105613/002                                       | Metal Storage Shelving Systems                            | Kakiat ES                           | 10/12/2023     | 10/26/2023       | 11/17/2023    | R&R         | R&R          |  |                   |
| 105613/003                                       | Metal Storage Shelving Systems                            | Kakiat ES                           | 12/19/2023     | 1/2/2024         |               |             |              |  |                   |
| 230910-001                                       | Automatic Temperature Controls                            | Kakiat ES                           | 10/27/2023     | 11/10/2023       | 11/3/2023     | AAN         | AAN          |  |                   |
| 230910-002                                       | Automatic Temperature Controls                            | Margets ES & Elmwood                | 10/30/2023     | 11/13/2023       |               |             |              |  |                   |
| 236200/003                                       | Variable Refrigerant Volume Systems (VRF)                 | Elmwood ES                          | 10/12/2023     | 10/26/2023       |               |             |              |  |                   |
| 237313.13-001                                    | Indoor, Basic Air-Handling Units (Kes Mes Ewes)           | Kakiat, Margets & Elmwood ES        | 10/6/2023      | 10/20/2023       | 11/3/2023     | NET         | NET          |  |                   |
| 238223/003                                       | Unit Ventilators  | Elmwood ES                          | 10/6/2023      | 10/20/2023       | 11/3/2023     | NET         | NET          |  |                   |
| 262416/001                                       | Panelboards - Product Data                                | Margets ES                          | 12/14/2023     | 12/28/2023       | 12/22/2023    | AAN         | AAN          |  |                   |
| 262416/002                                       | Panelboards - Product Data                                | Kakiat ES                           | 12/15/2023     | 12/29/2023       | 12/22/2023    | AAN         | AAN          |  |                   |
| 260526/001                                       | Grounding & Bonding - Product Data                        | Margets ES                          | 1/12/2024      | 1/26/2024        |               |             |              |  |                   |
| 260526/002                                       | Grounding & Bonding - Product Data                        | Kakiat ES                           | 1/15/2024      | 1/29/2024        |               |             |              |  |                   |



## Phase 3A – RFI Log - To Date (Page – 1 of 1)

| Current Date  | 1/19/2024  | East Ramapo Central School District |           |  |   |           |        |
|---|--|-------------------------------------|-----------|--|---|-----------|--------|
| TOTAL   | 013  | PHASE 3A - RFI LOG                  |           |  |   |           |        |
| Due < 2 DAYS  | 000  |                                     |           |  |   |           |        |
| OVERDUE   | 000  |                                     |           |  |   |           |        |
| Request For Information: 5 Business Days for Review |  |                                     |           |  |   |           |        |
| RFI No #  | School   | Date Submitted                      | Due Date  | GC - Question  | CSArch - Answer   | Returned  | Status |
| 001   | All Six Schools                                      | 6/22/2023                           | 6/29/2023 | Record RFI - MS Teams Meeting 6.7.23   | Responses to questions compiled by Renu/Milburn regarding FRCSO Phase 3A Flooring and review via Microsoft Teams call on 6/7/2023. Original memo prepared by Renu/Milburn is attached for reference.  | 6/28/2023 | CLOSED |
| 002   | All Six Schools                                      | 6/22/2023                           | 6/29/2023 | In some of the rooms where we are scheduled for floor removal there are large window air conditioner units that are currently supported by casework on schedule to be removed.<br>- Please advise who will be removing and reinstalling these units prior to work start. Thank you.  | The district is in the process of removing the window air conditioning units from the work areas  | 6/27/2023 | CLOSED |
| 003   | All Six Schools                                      | 6/22/2023                           | 6/29/2023 | <b>Clarify Scope at UV Casework</b><br>• Hempstead (Chase w Duct) - Refer to CIC 02GC-002HES for additional information regarding casework at Hempstead ES.<br>• Libraries (some have electric - Clarify question/comment, provide additional information.<br>• We would like to get exploratory access to one of each type of UV style before work start – maybe hit on the June 19th weekend<br><b>Shelving</b><br>• Some (poor condition) Shelving is nailed in – may be best to replace with something off the shelf rather than reinstall. - Provide list of locations where shelving is a concern and contractor recommends replacement for district to evaluate.<br><b>Clarify Districts removal scope</b><br>• Smart Boards<br>• Classroom Computers<br>• Computer towers in IT Rooms<br>• GIANT A/C's (that happen to be demo'd casework) | The district will be removing, storing and reinstalling after construction is complete the following items from the work areas:<br>Floor mounted smart boards (per base bid drawings contractor remove and safely store existing floor mounted supports for smart boards & then reinstall after new flooring installation), classroom computers, and computer towers.<br>Wall mounted smart boards shall remain in classrooms during construction and shall be properly protected.<br>See attached for additional comments in red font.   | 6/28/2023 | CLOSED |
| 004   | Eldorado   | 6/22/2023                           | 6/29/2023 | Eldorado Stairwells  | The intent is to not abate landings with stone tiles as a finish. Stone finish is to remain on the stair landings and treads.   | 6/29/2023 | CLOSED |
| 005   | Hempstead  | 6/22/2023                           | 6/29/2023 | The plans call for removal and reinstall of the Built-in cubbies. the cubbies are not modular and were built in place. Removal would mean complete dismantling. Please advise if this casework could be left in place.   | The "cubbies"/casework should be removed and reinstalled as required by the contract documents. These "cubbies"/casework are substantially built, secured at the top and not to the side walls. Identify any locations where the "cubbies"/casework are in danger of damage from removal so that the district can review these locations in the field.  | 6/28/2023 | CLOSED |
| 006   | Eldorado   | 6/22/2023                           | 6/29/2023 | Plans call for NO abatement in room 235(254sf) however the conditions are the same throughout the library- room 234 (1956sf) 233 (247sf) 236 (329sf) 238 (1614sf) Faculty room 240 (759 sf) Room 141 is the only room with exposed 9x9's and it does not look like they run under the carpet. See attached photos  | The following is per our offices conversations with Todd McAfee at QuES&T:<br>Room 235 - requires no abatement as it has no ACM flooring (per contract drawings)<br>Room 233 - requires abatement 9x9 ACM tile under carpet (per contract drawings)<br>Room 236 - requires abatement 9x9 ACM tile under carpet (per contract drawings)<br>Room 237 - requires abatement 9x9 ACM tile under carpet (per contract drawings)<br>Room 241 - 9x9 exposed ACM tile, this is an active server room and abatement/construction activities need to be coordinated with the district.<br>NOTE: All other spaces in the Library (Room 234) and Faculty Room 240 have no ACM flooring (existing flooring is either carpet on concrete slab or non-ACM 1'x1' tile on concrete slab)- shown as being abated in contract documents provide credit back to owner. | 6/29/2023 | CLOSED |
| 007   | Summit Park  | 6/28/2023                           | 7/5/2023  | At Summit Park - Rooms 119 and 120, the flooring does not appear to go under the corian countertop casework, please confirm if this casework can be left in place and the flooring can go up to the casework base. Please see the attached photo, please confer w Gino.  | Per the contract documents existing casework in Classrooms 199 and 120 is to remain in place. Per documents protect during removals, remove any existing resilient base adhered to casework and provide new resilient base.   | 6/28/2023 | CLOSED |
| 008   | Hempstead (9x9" tile under Cubbies and Book Shelves) | 6/30/2023                           | 7/7/2023  | Per CIC 02 002 HES on the lower floor: Cubbies and book shelving in rooms is to be removed and reinstalled, at multiple locations we have encountered 9x9" tile underneath removed casework, please advise on how to proceed - would you like to apply our abatement allowance?  | Cubbies removal are part of base scope of work. Owner would like to see pricing for additional abatement. Please refer to CIC 02-005-HES issued for records.  | 7/13/2023 | CLOSED |
| 009   | Summit Park (Tan Cove Glue)                          | 6/30/2023                           | 7/7/2023  | For Summit Park - Quest indicated black cove base glue was positive for ACM. At a couple test locations we have encountered tan cove base glue, please advise if you would like to re-test sections of the Tan Cove glue locations for ACM in their interest of speeding up work.  | Per CSARCH discussions with Todd McAfee of QuES&T:<br>The positive sample was described on the results by the laboratory as being beige/brown in color, meaning that the samples that tested positive had both the older and newer adhesives mixed together. Todd McAfee visited Summit Park on 6/30/2023 and probed several areas and noted a mix of beige and brown adhesive in all areas probed. He did not see enough other differing varieties of material to justify additional sampling. Beige/brown adhesive was identified as ACM, and should be treated as such.  | 7/3/2023  | CLOSED |
| 010   | Summit Park (Hot Tile under Casework 158 & 159)      | 7/3/2023                            | 7/10/2023 | Approx. 35 sf of assumed ACM tile has been uncovered at Summit Park Library (158 & 159) - Please advise on how you would like to proceed.  | Owner would like to see pricing for additional abatement. Please refer to CIC 02-005-SFES issued for records.   | 7/13/2023 | CLOSED |
| 011   | Hempstead  | 7/3/2023                            | 7/10/2023 | Please confirm Directions on the items on the following page ( Please see photos for reference)  | Owner would like to see pricing for additional abatement. Please refer to CIC 02-005-HES issued for records.  | 7/13/2023 | CLOSED |
| 012   | Hempstead  | 7/20/2023                           | 7/27/2023 | Please advise how to proceed at rooms with unusual UV Piping (see the photos below for Reference. Renu recommends mock ups at atypical locations -SQ   | The district has selected the floor mounted fin-tube enclosure, will this eliminate any of the piping concerns? Can mock up be provided for areas that are still a concern?<br>The school/rooms of concerns were provided in a separate e-mail by RENU and are as follows: Eldorado room 102 has pipes coming out of floor, Grandview 119/120 are only 20" to the floor, Hempstead 314, 313, 312 and 311 have pipes running along the floor, Lime kiln 105 and 107 have pipes coming out floor, Summit park 190 has fin tube at 24" 183 protruding pipes and 167 pipes coming out floor   | 7/31/2023 | CLOSED |
| 013   | All Six Schools                                      | 9/29/2023                           | 10/6/2023 | Please advise specifically which transition you would like to replace the currently installed ADA compliant transition   | The Roppe A177 Tile Carpet Joiner is for use when transitioning from carpet to tile and this is not the application on site and therefore unacceptable. Provide the new surface edge protection between new LVT and existing bluestone stair tread. Contractor to verify in field for height differential of flooring materials and to select appropriate profile from MFR: Schluter-VINPRO, brushed chrome anodized (or approved ADA compliant equal).   | 11/8/2023 | CLOSED |



## Phase 3A – Submittal Log – To Date (Page – 1 of 1)

|  |           |   |                         |                |                  |               |             |              |
|--|-----------|---|-------------------------|----------------|------------------|---------------|-------------|--------------|
| Current Date                           | 1/19/2024 | East Ramapo Central School District                                 |                         |                |                  |               |             |              |
| TOTAL                                  | 9         | Phase 3A - Submittal Log  |                         |                |                  |               |             |              |
| Due < 2 DAYS                           | 0         |   |                         |                |                  |               |             |              |
| OVERDUE                                | 6         |   |                         |                |                  |               |             |              |
| TO CONTRACTOR                          |           | Initial Review: 10 WD/ Re Submittal Review: 7 WD                    |                         |                |                  |               |             |              |
| Submittal Spec Section / Submittal No. |           | Description   | School                  | Date Submitted | Due Date (10 WD) | Date Returned | Status -000 | Final Status |
| 028200-001                             |           | Asbestos Abatement - Waste Permit                                   | Hempstead ES            | 6/21/2023      | 7/5/2023         |               |             |              |
| 028200-002                             |           | Logistic & Posting  | Hempstead ES            | 6/21/2023      | 7/5/2023         |               |             |              |
| 028200-003                             |           | Updated Schedule & Logistics Drawing                                | Hempstead ES            | 6/26/2023      | 7/10/2023        |               |             |              |
| 028200-004                             |           | Updated Phasing Logistics Drawing                                   | Hempstead ES            | 6/28/2023      | 7/12/2023        | 7/9/2023      | NET         | NET          |
| 028200-005                             |           | Asbestos Abatement Pre-Work Submittals Sub-IAR                      | Lime Kiln & Summit Park | 7/6/2023       | 7/20/2023        | 7/9/2023      | NET         | NET          |
| 096723-001                             |           | Resinous Flooring - Product Data                                    | All Schools             | 6/26/2023      | 7/10/2023        | 6/30/2023     | AAN         | AAN          |
| 096766-001                             |           | Gym Floor Rendering Shop Drawings (Fluid Applied Athletic Flooring) | All Schools             | 8/22/2023      | 9/5/2023         |               |             |              |
| 123216-001                             |           | Casework - Product Data   | All Schools             | 8/11/2023      | 8/25/2023        |               |             |              |
| 123216-002                             |           | Casework - Shop Drawings  | All Schools             | 8/11/2023      | 8/25/2023        |               |             |              |
|  |           |   |                         |                |                  |               |             |              |
|  |           |   |                         |                |                  |               |             |              |
|  |           |   |                         |                |                  |               |             |              |

Daily Construction Field Reports & CIC's are available upon request.

**END OF REPORT**